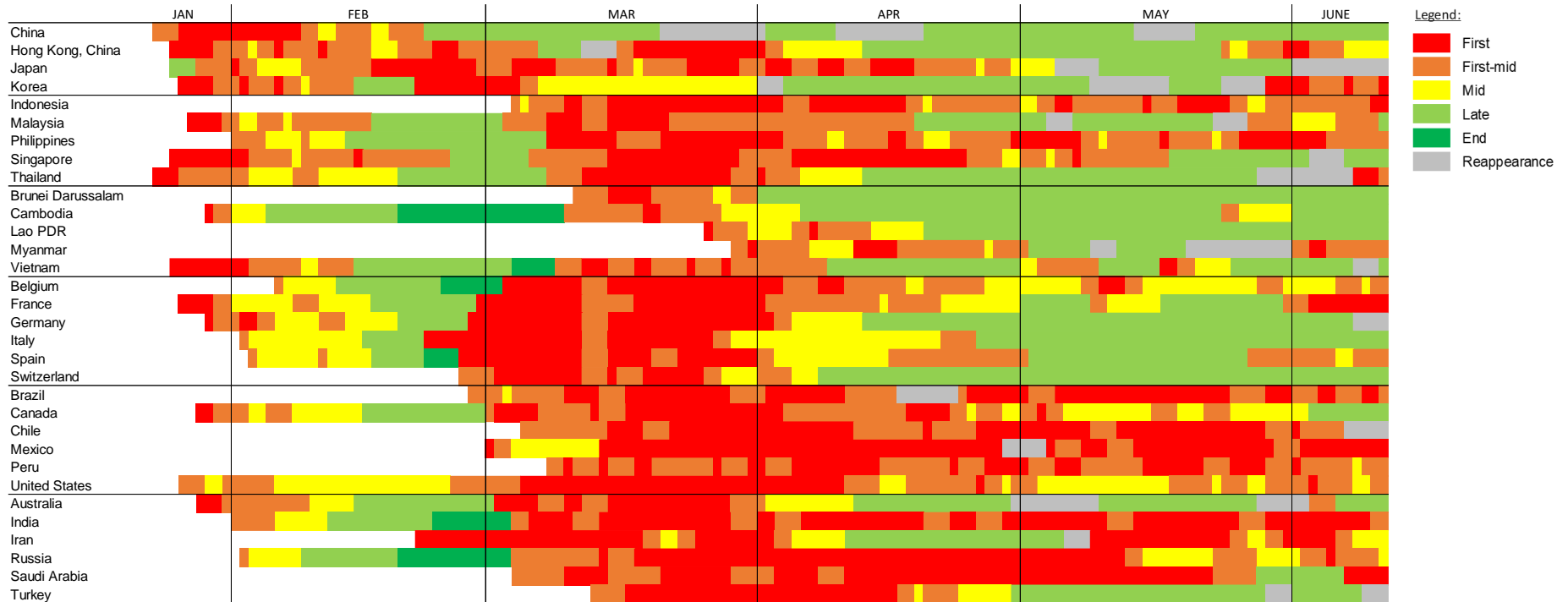


Friday, June 12, 2020

Data as of June 11, 2020

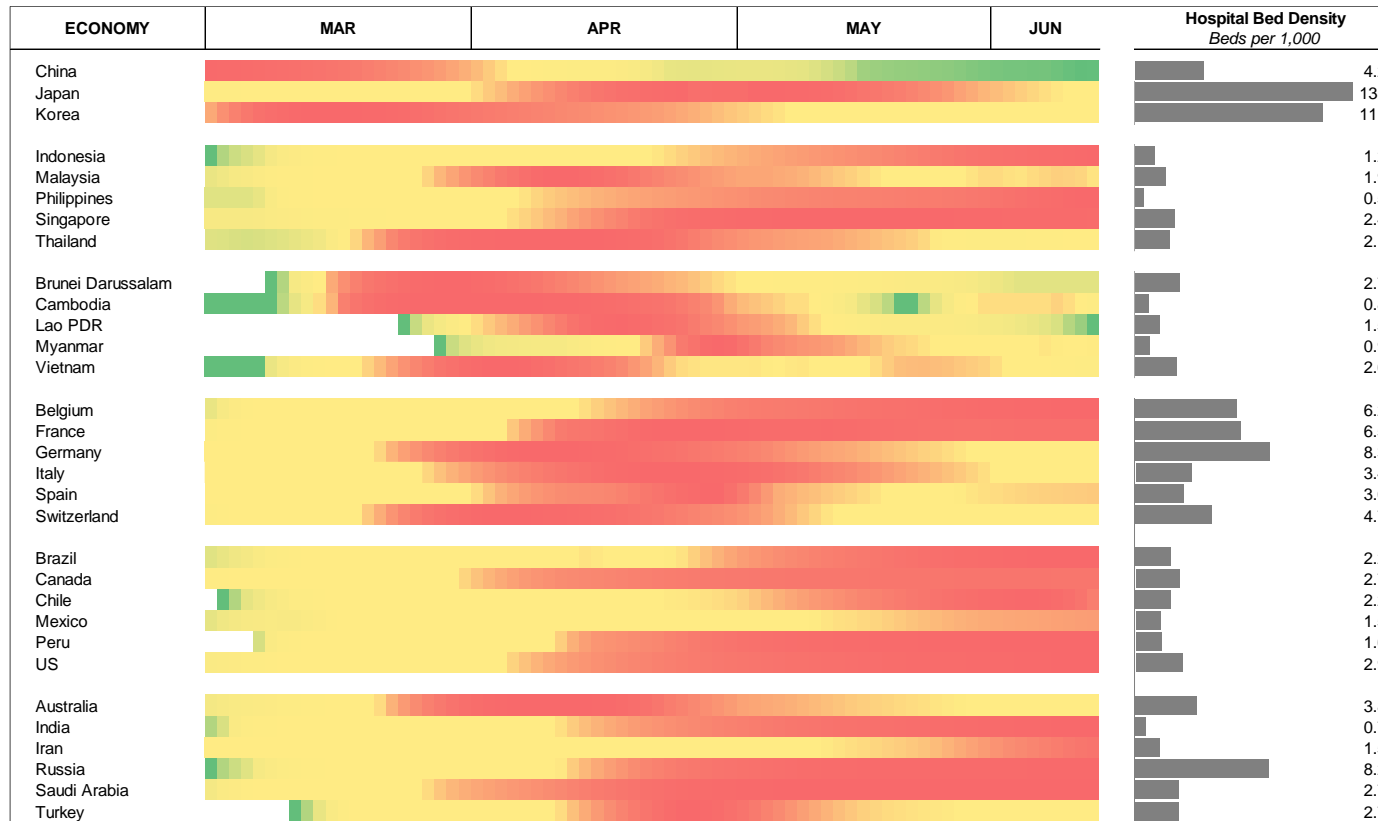
Figure 1. ASEAN+3 and Selected Economies: Covid Cycle Heat-map



Sources: Haver Analytics, sourced from John Hopkins University; and AMRO staff calculations.

Note: Based on [Hinojales, Marthe, Anne Oeking, and Li Lian Ong. 2020a. "Where are We in the Covid Cycle?" AMRO Analytical Note, Singapore, April 27.](#) The individual trajectories through the various stages of the Cycle are detailed in Figure 9.

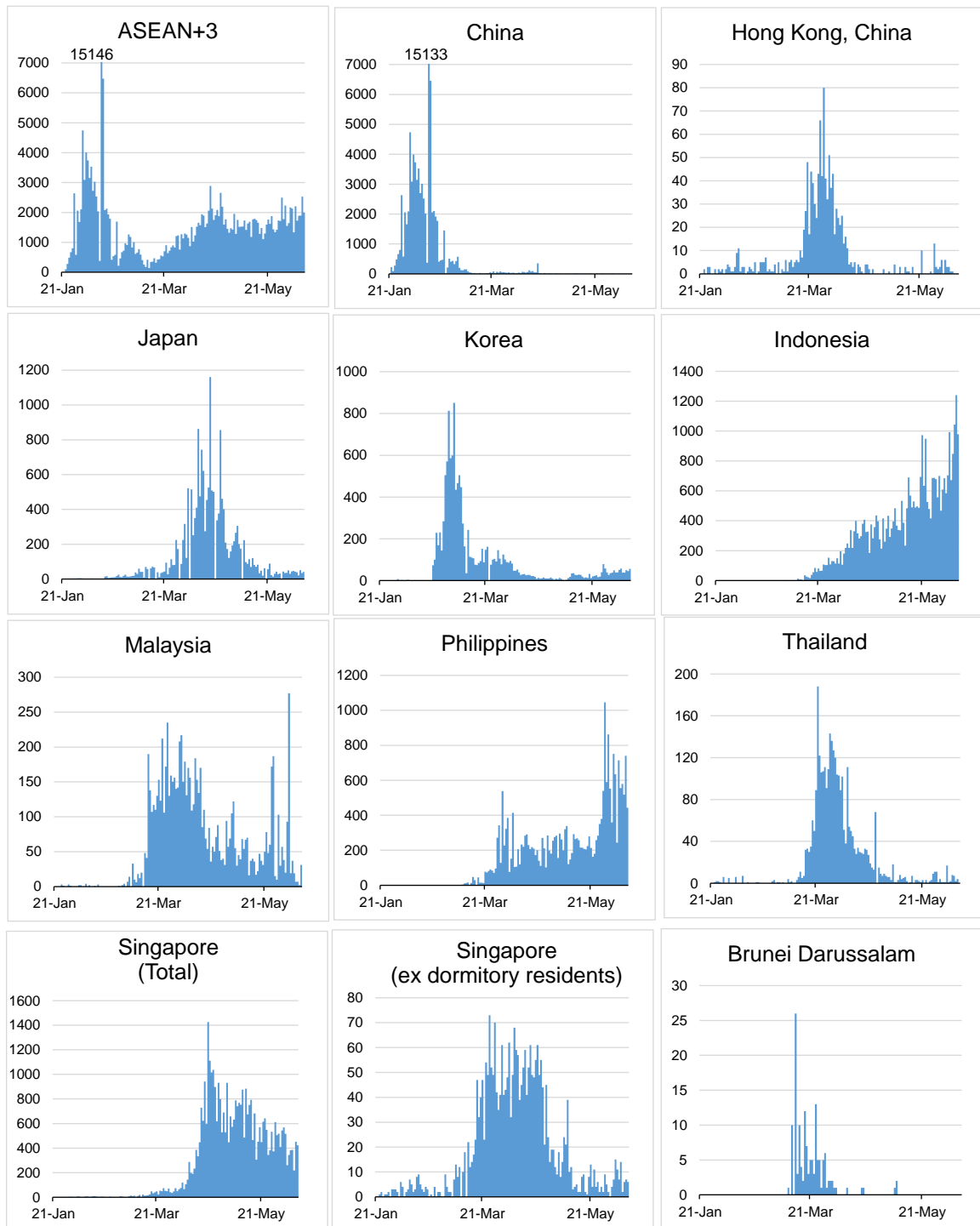
Figure 2. ASEAN+3 and Selected Economies: Capacity of the Healthcare System during COVID-19
(Measured by the number of hospital beds to active cases)



Sources: Haver Analytics, sourced from John Hopkins University; World Health Organization; and AMRO staff calculations.

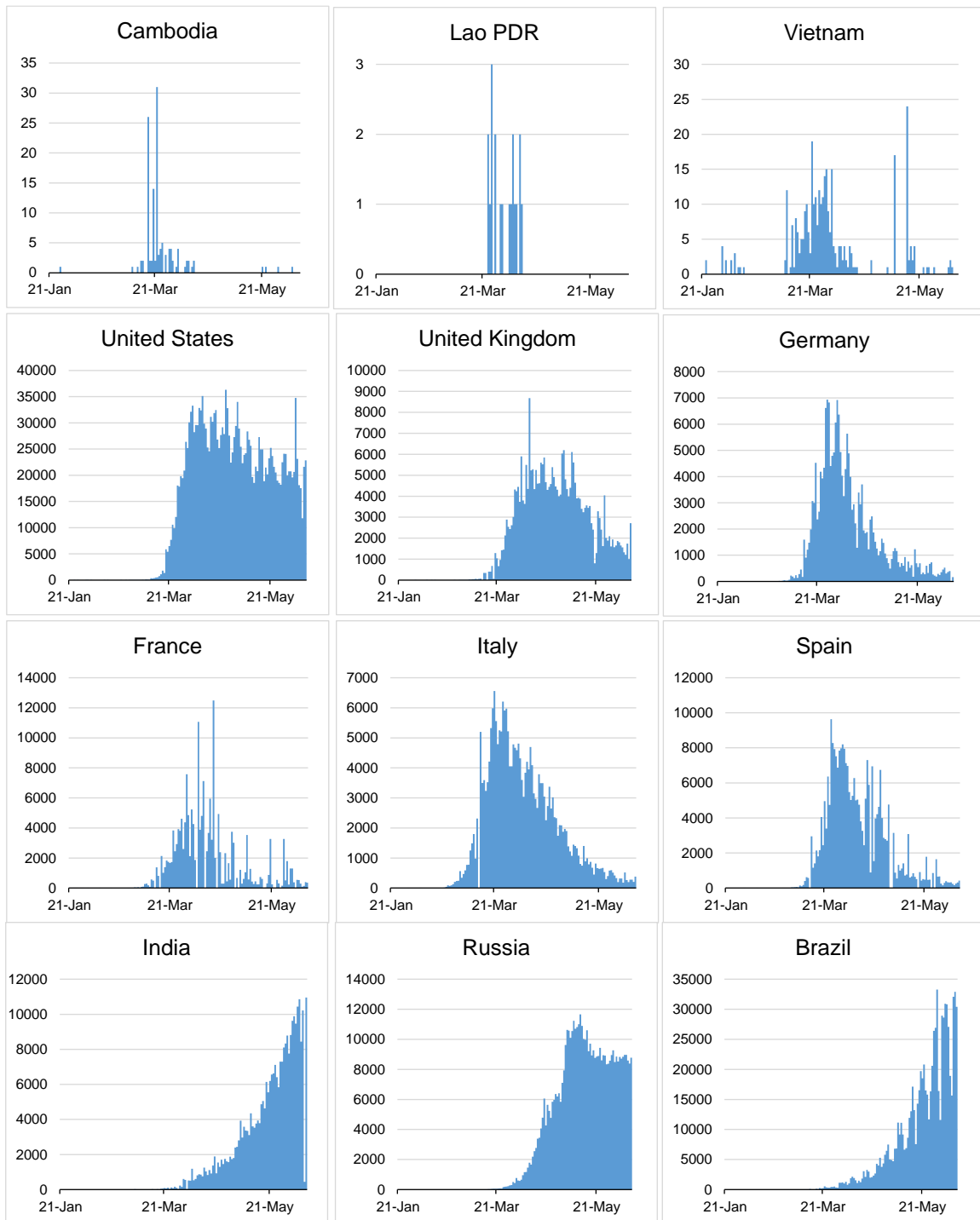
Note: The greener the heatmap, the greater the capacity of the healthcare system; the redder, the weaker the capacity.

Figure 3. Selected Economies: Daily Confirmed Cases



Note: For Singapore, the majority of the new confirmed cases belongs to work permit holders residing in dormitories. For the past one week (June 5-11), the proportion of this group of cases took up 97.8% of the total new cases.

Figure 3. Selected Economies: Daily Confirmed Cases
(Cont'd)



Sources: Haver Analytics, sourced from John Hopkins University; and AMRO staff calculations.

Figure 4. Selected Economies: Daily Confirmed Deaths

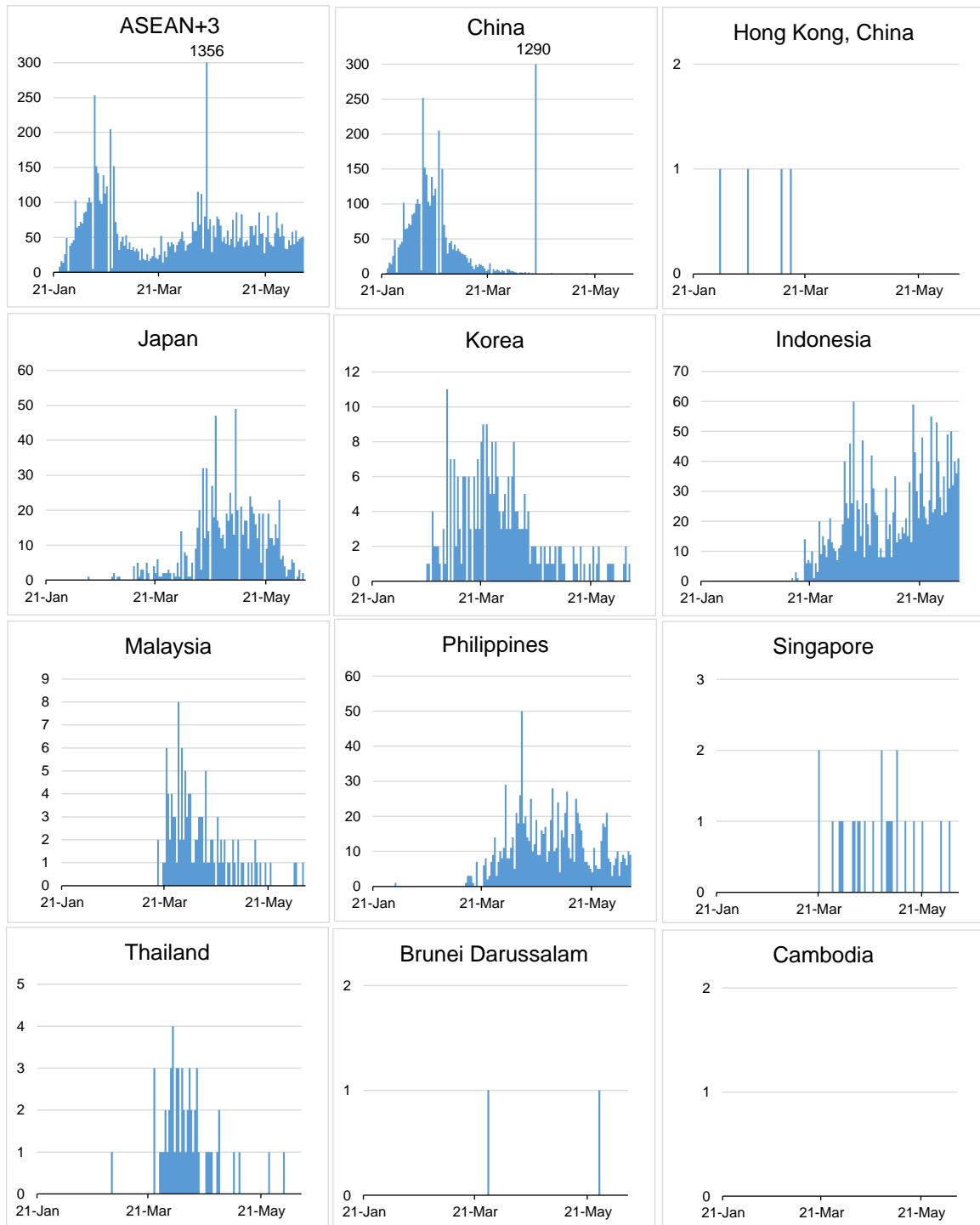
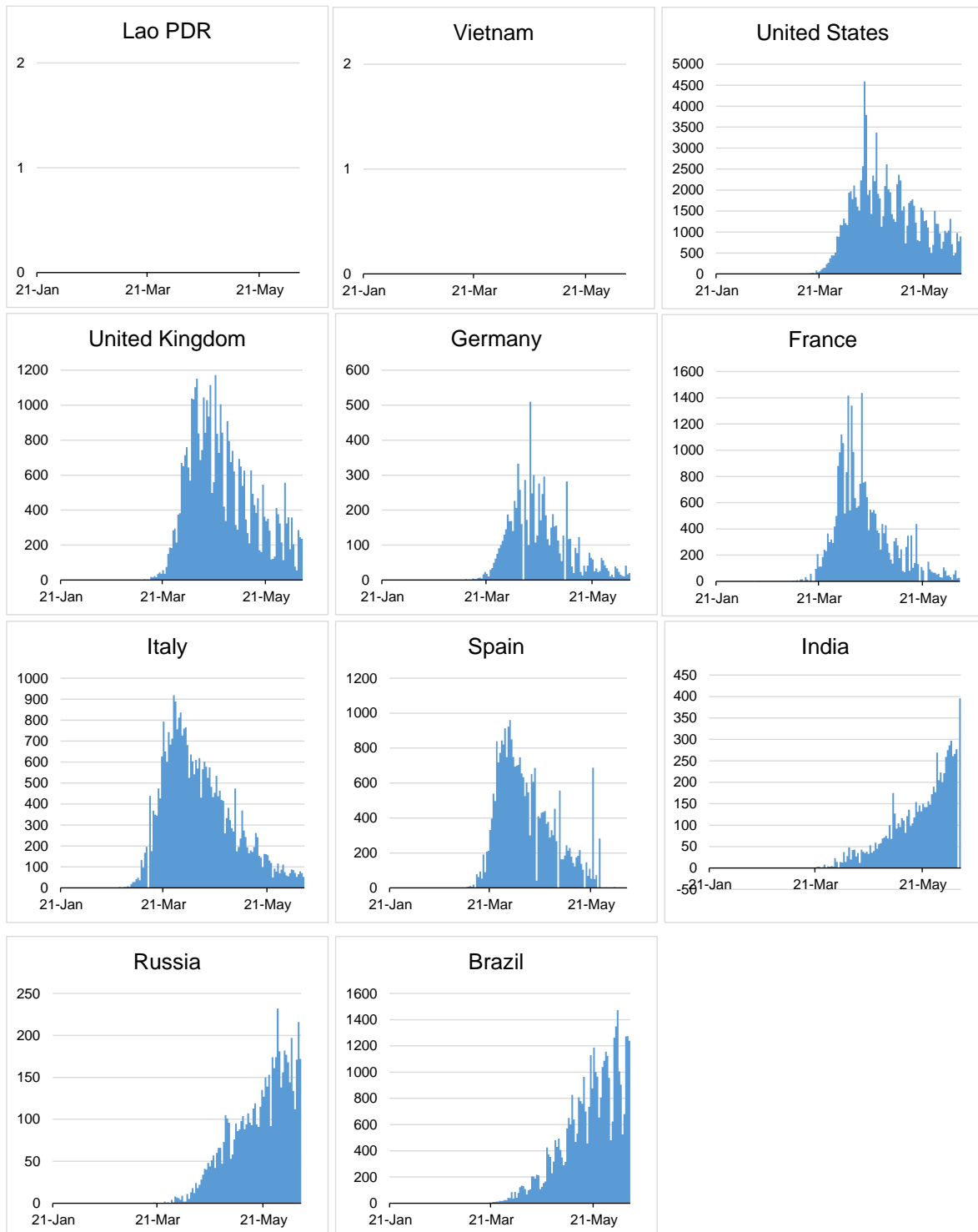
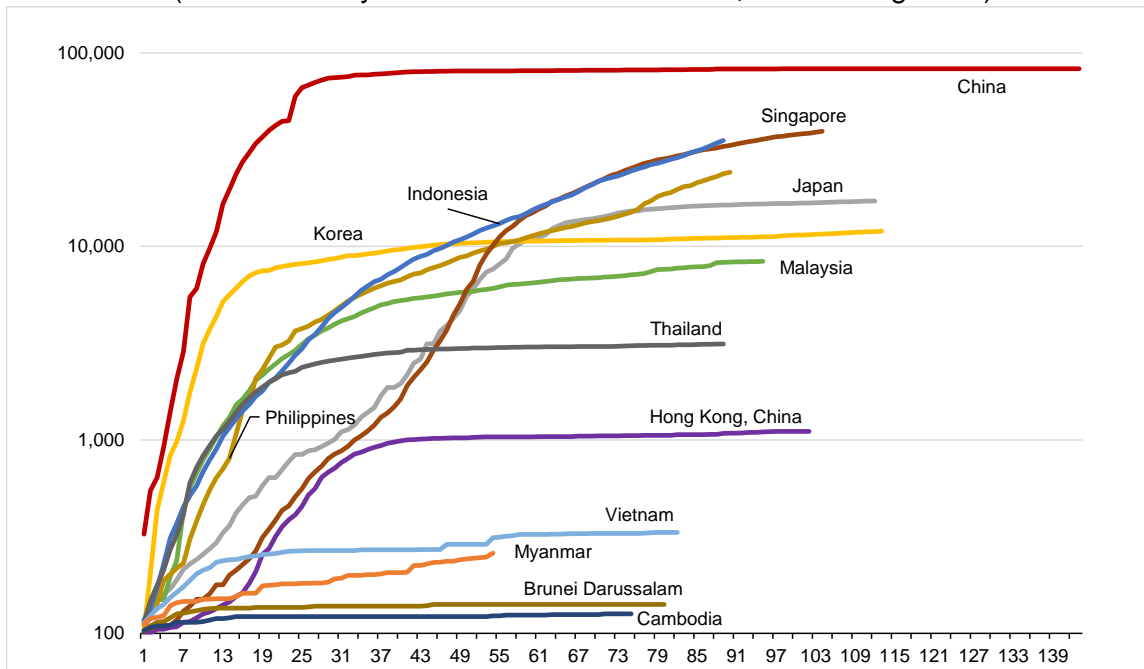


Figure 4. Selected Economies: Daily Confirmed Deaths
(Cont'd)



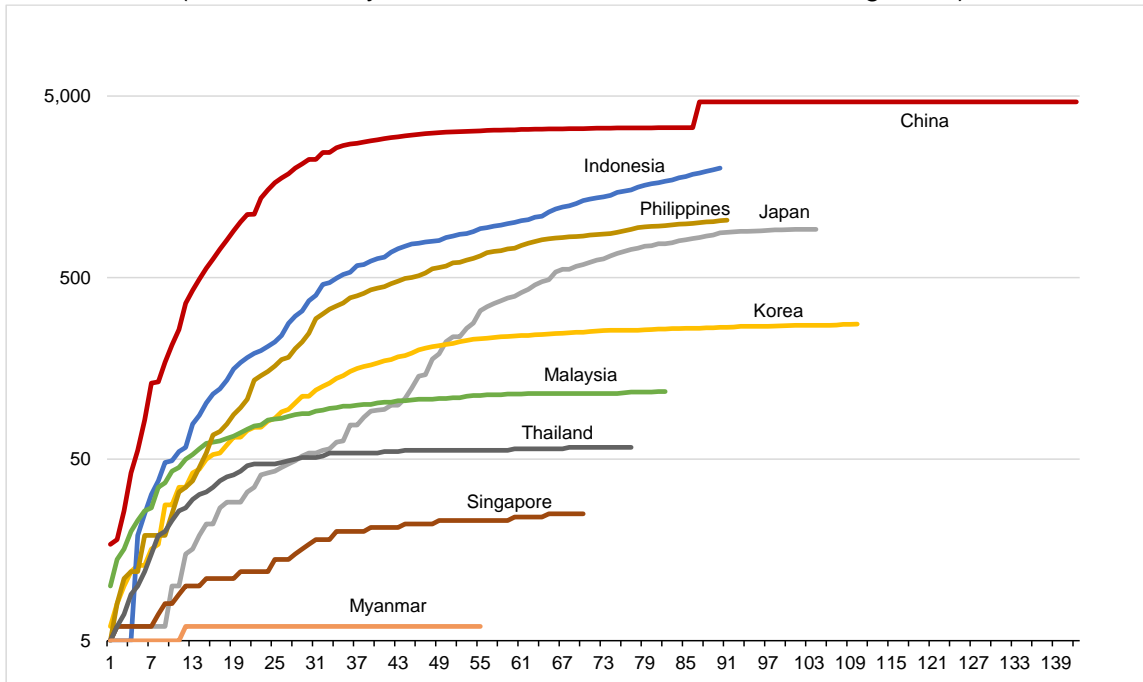
Sources: Haver Analytics, sourced from John Hopkins University; and AMRO staff calculations.

Figure 5. ASEAN+3: Confirmed Cases
 (Number of days after 100th confirmed case; cases in log scale)



Sources: Haver Analytics, sourced from John Hopkins University; and AMRO staff calculations.

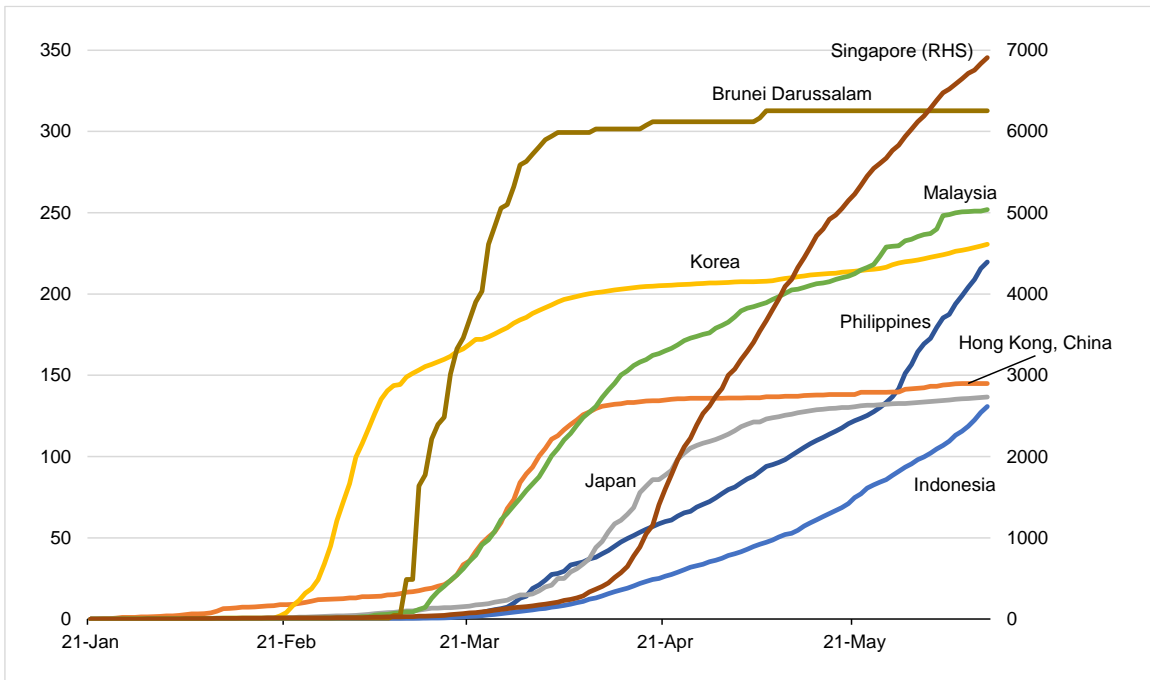
Figure 6. ASEAN+3: Confirmed Deaths
 (Number of days after 5th confirmed case; cases in log scale)



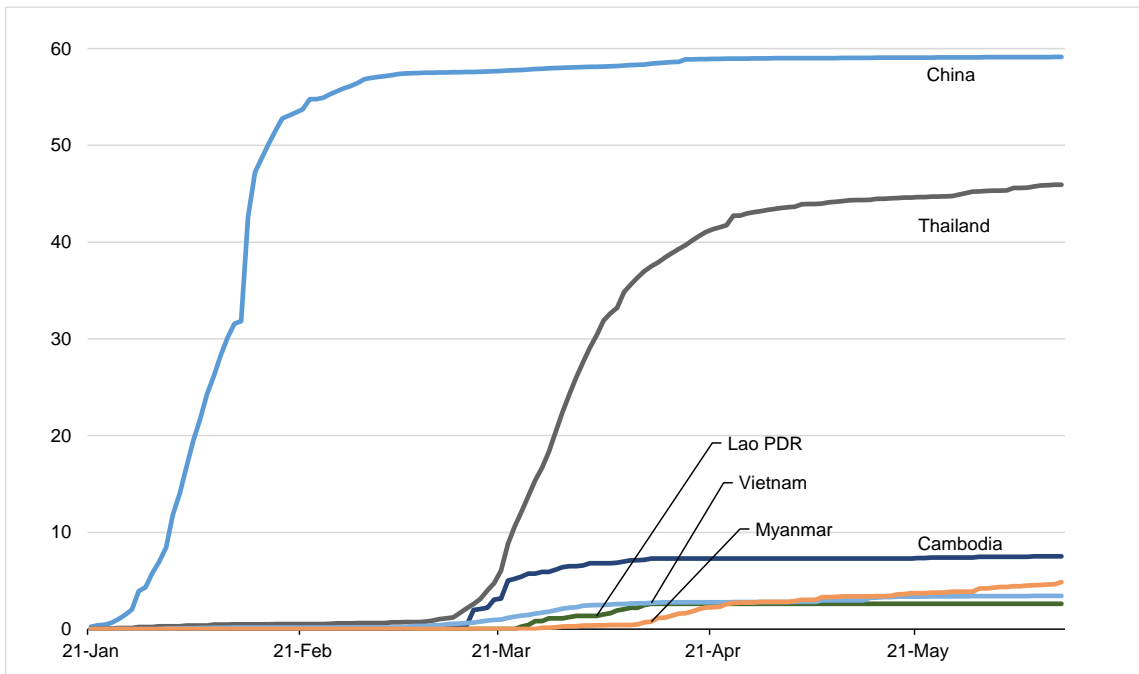
Sources: Haver Analytics, sourced from John Hopkins University; and AMRO staff calculations.

Figure 7. Selected ASEAN+3 Economies: Confirmed Cases

Per million population (above 100 cases/million)

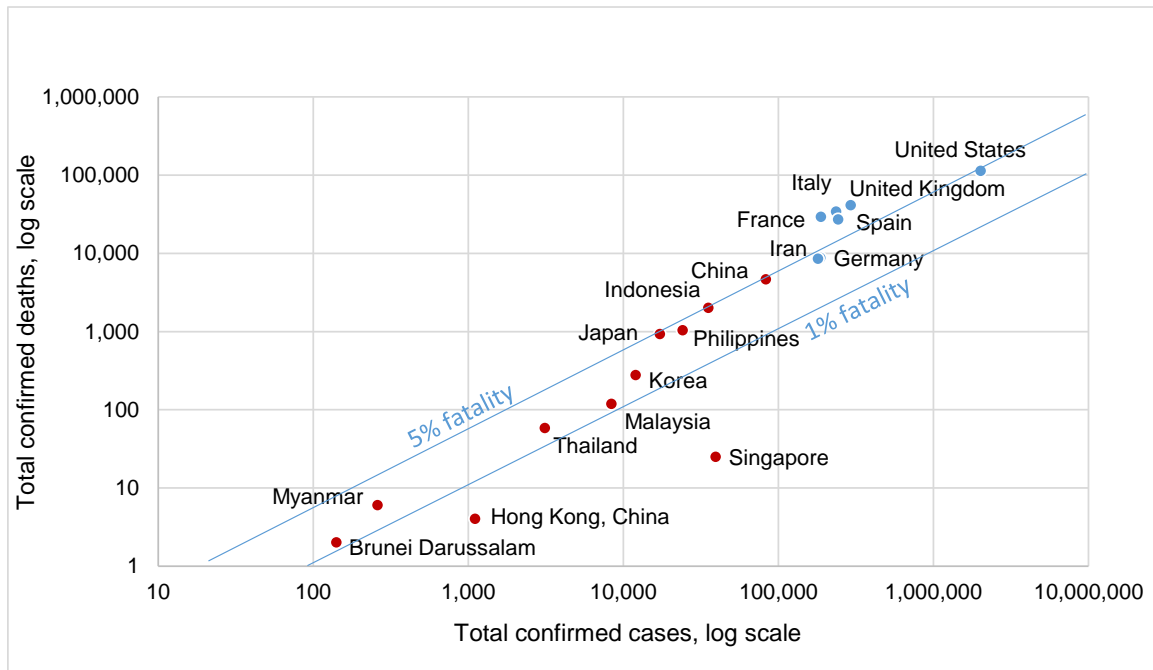


Per million population (below 100 cases/million)



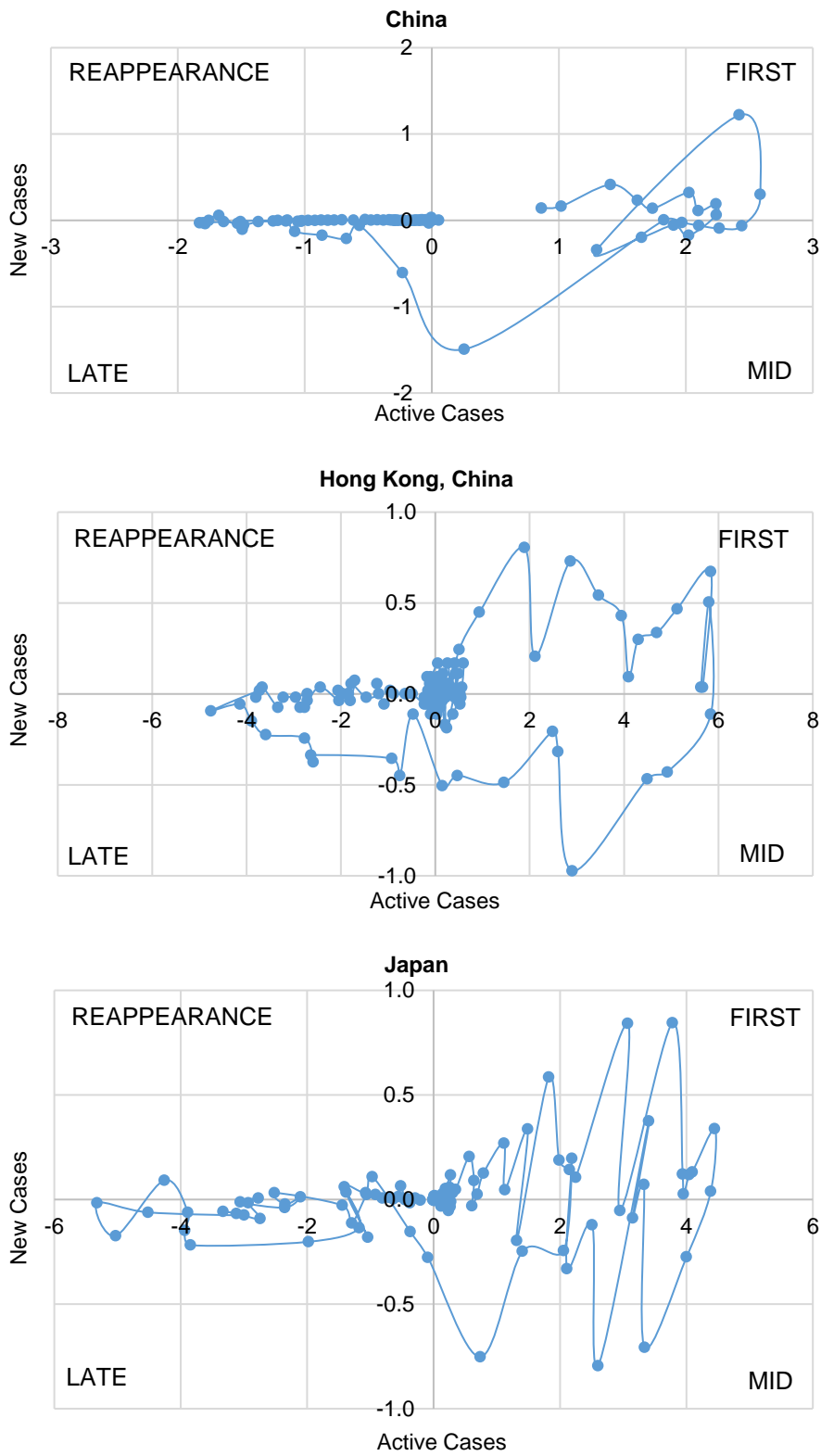
Sources: Haver Analytics, sourced from John Hopkins University; and AMRO staff calculations.

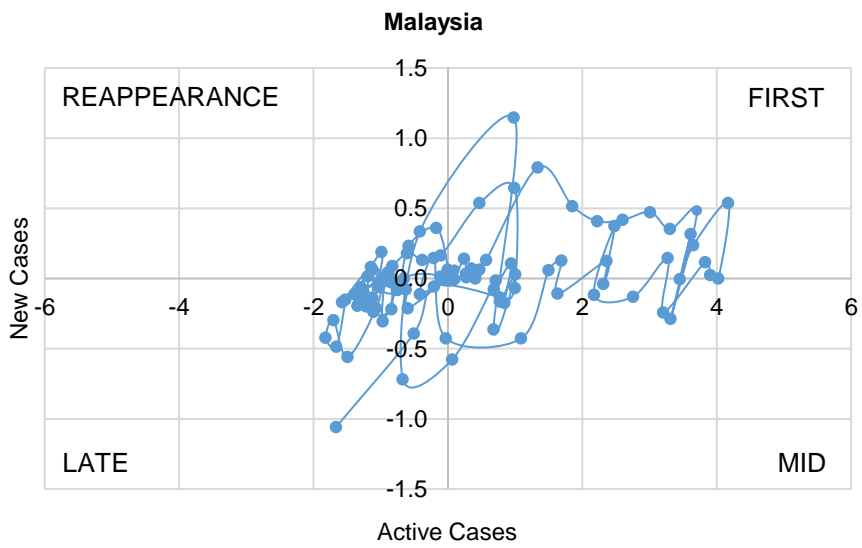
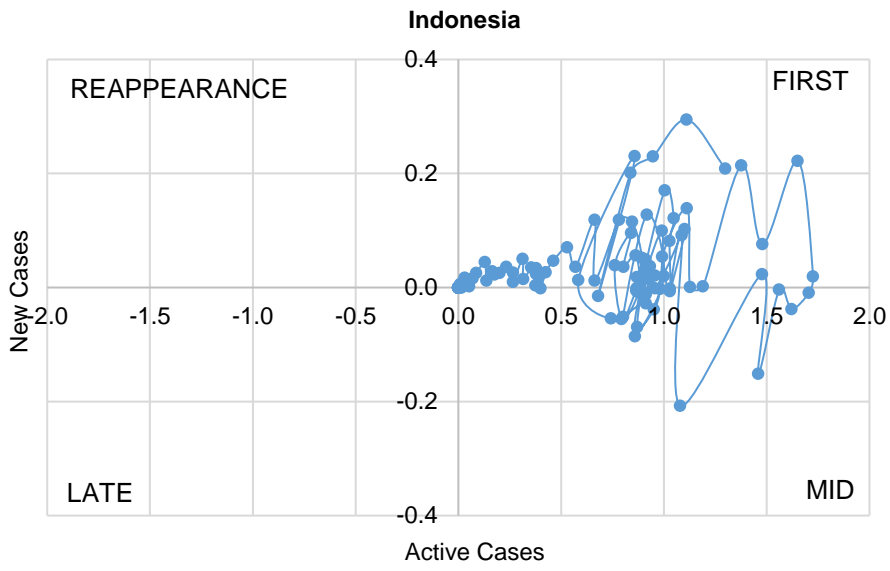
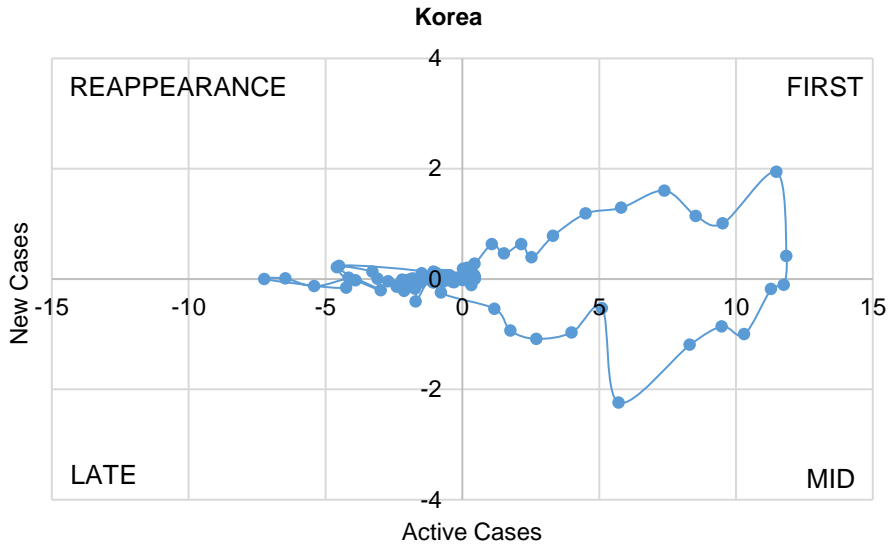
Figure 8. Selected Economies: Confirmed Cases vs. Confirmed Deaths



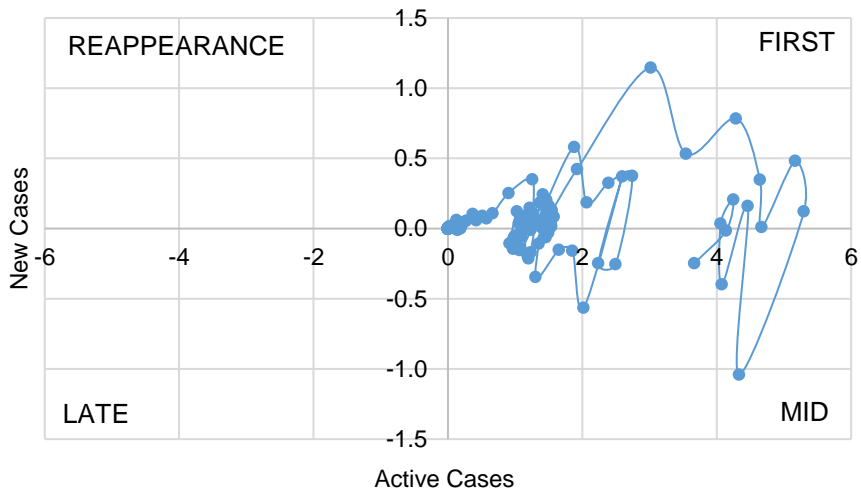
Sources: Haver Analytics, sourced from John Hopkins University; and AMRO staff calculations.

Figure 9. ASEAN+3 and Selected Economies: Covid Cycle
 (Change in number of persons per one million population)

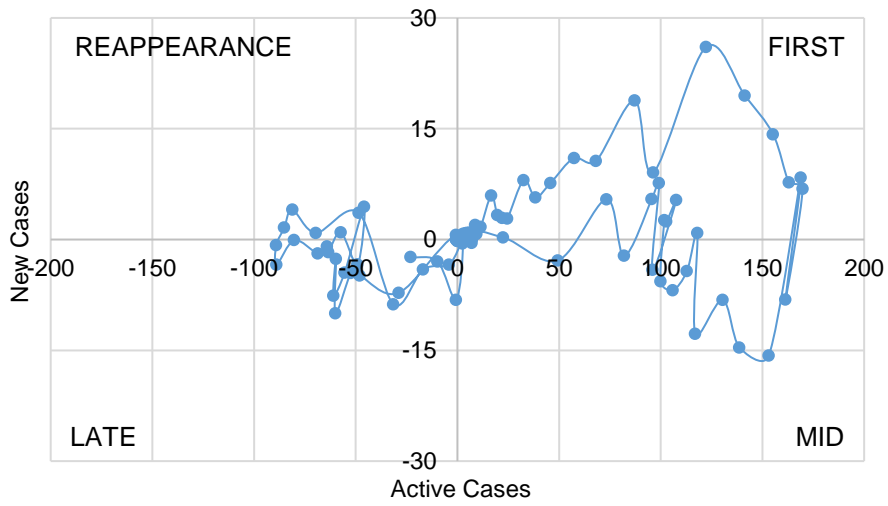




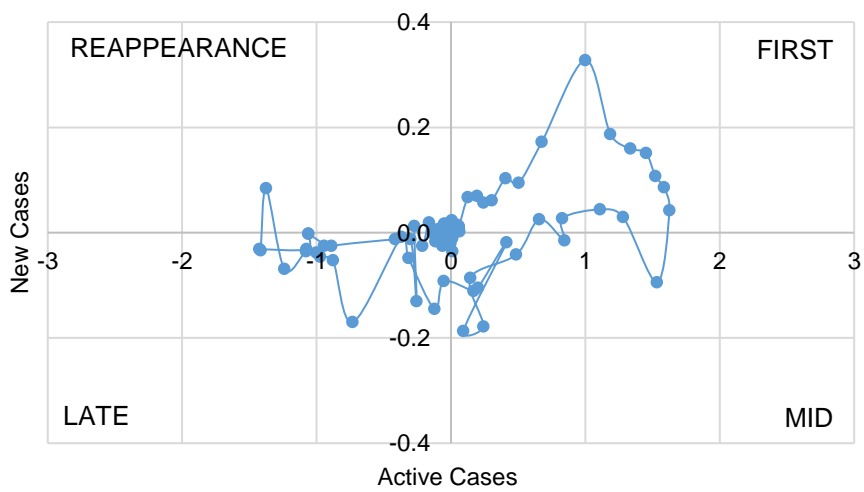
Philippines

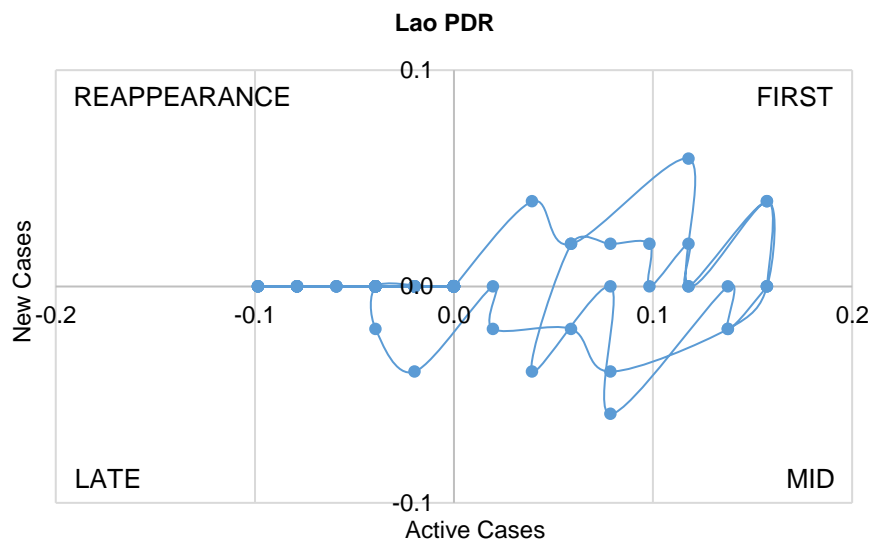
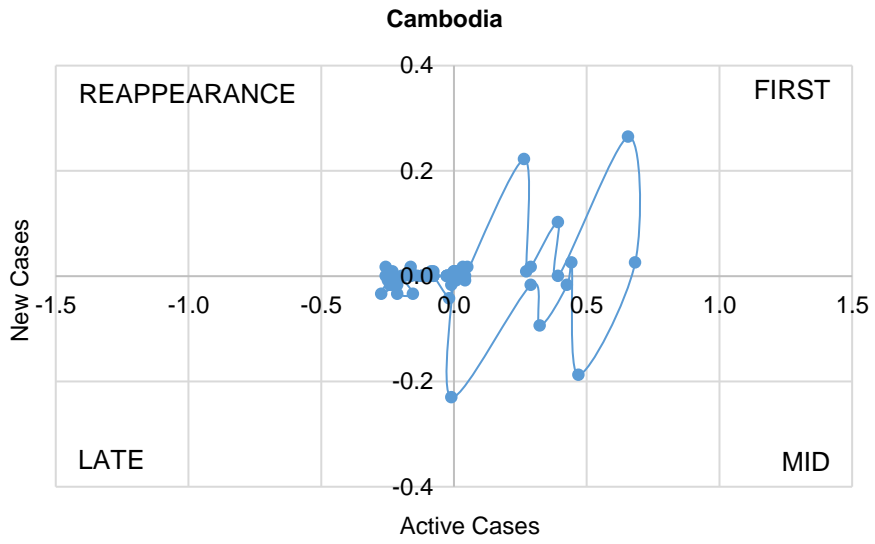
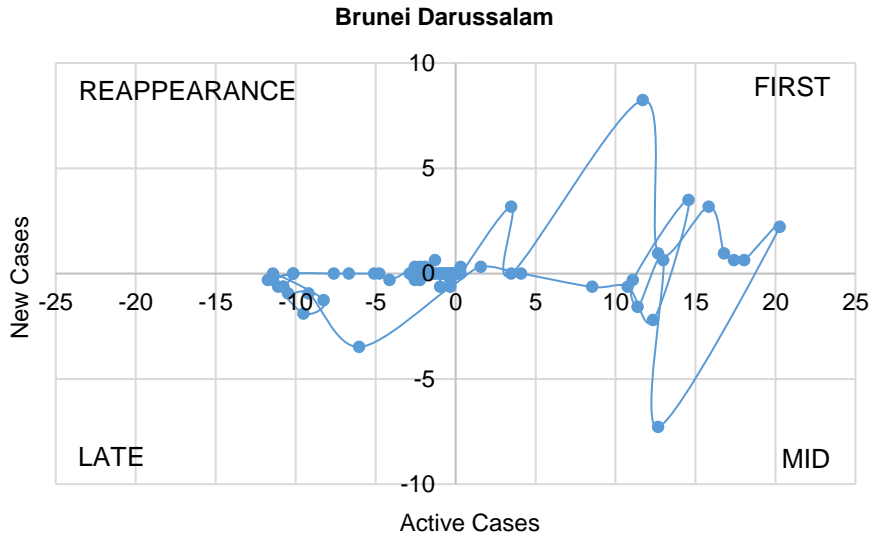


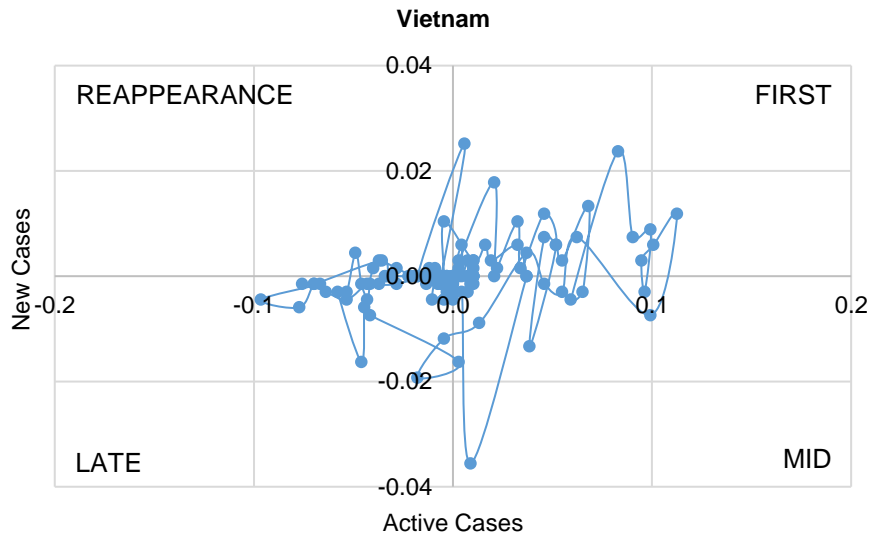
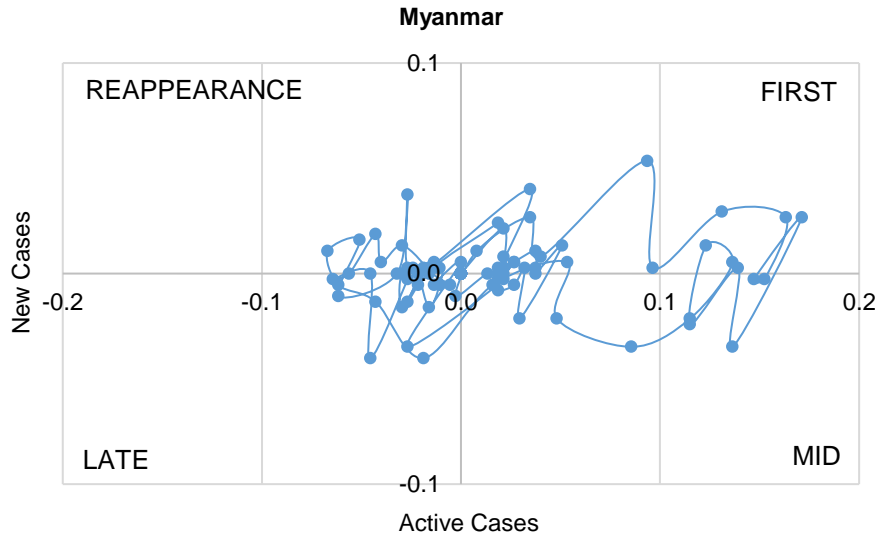
Singapore

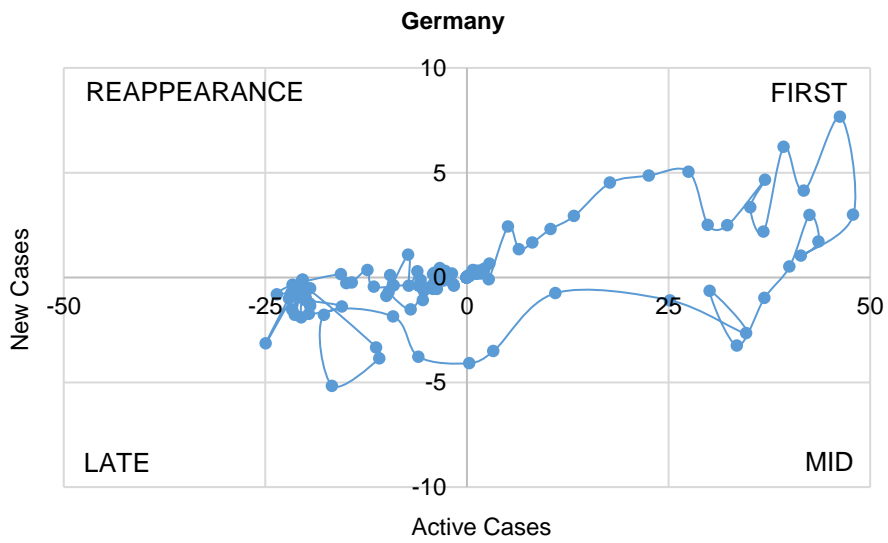
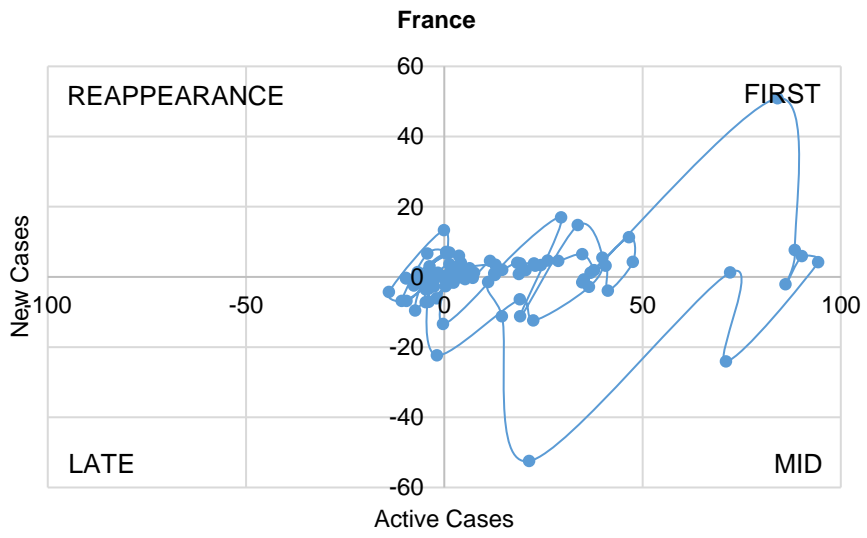
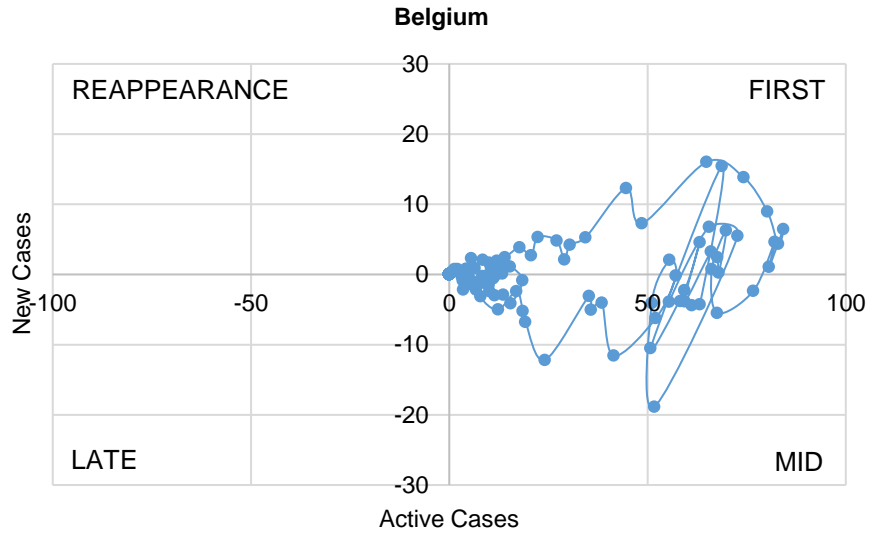


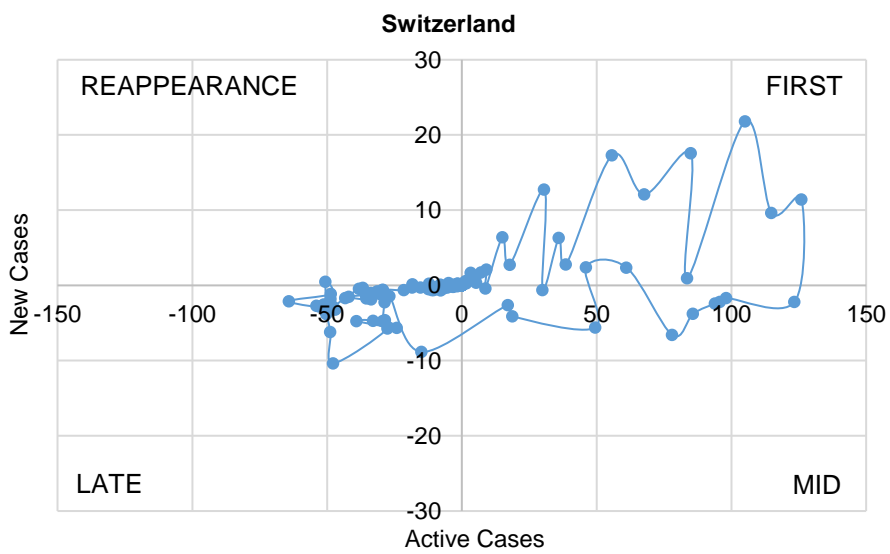
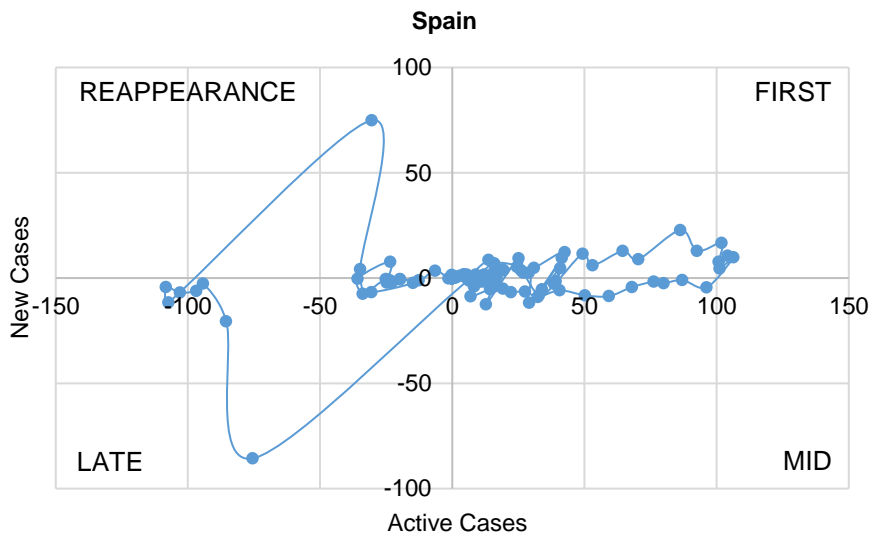
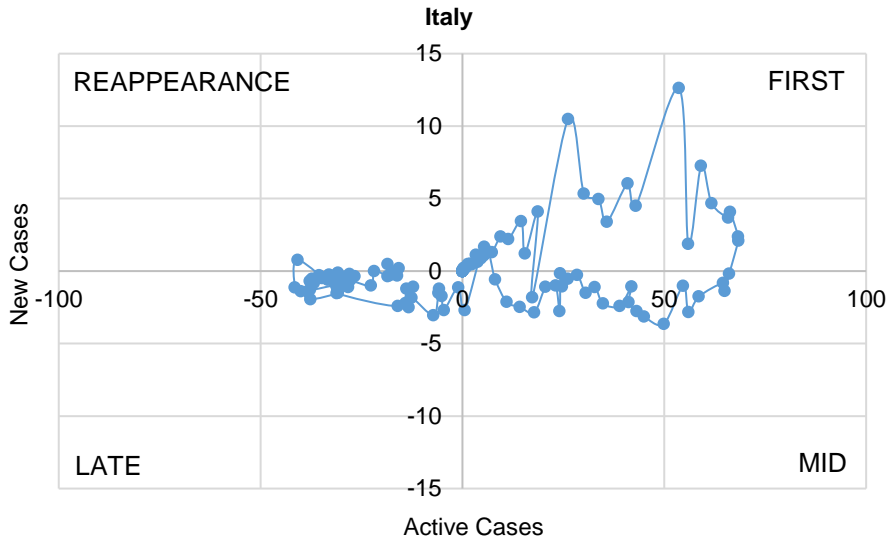
Thailand

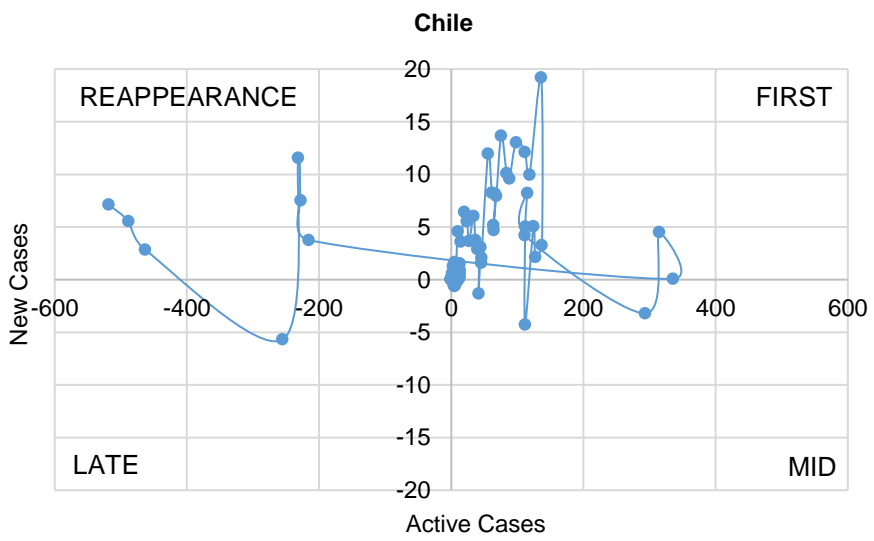
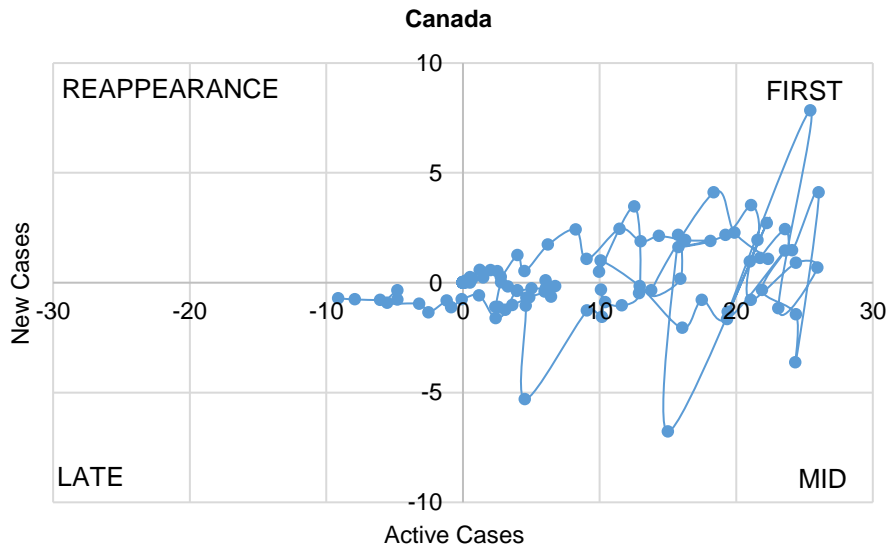
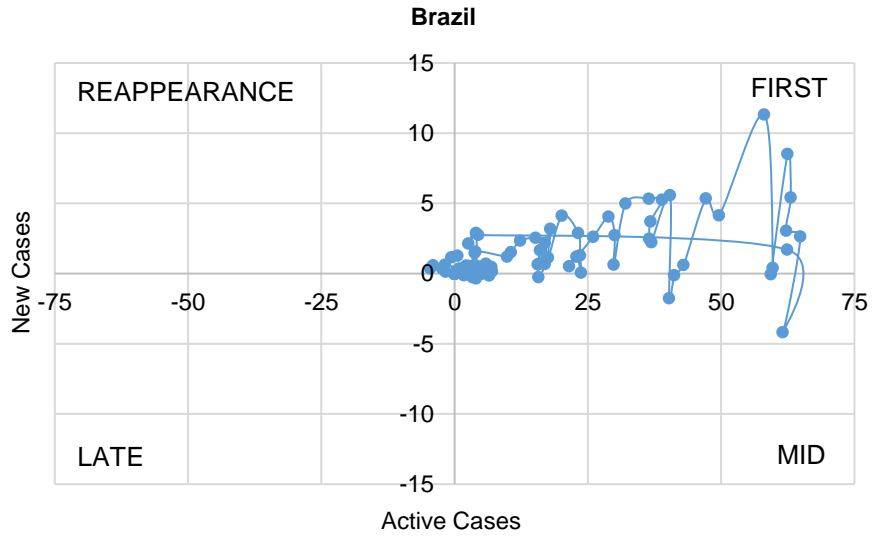


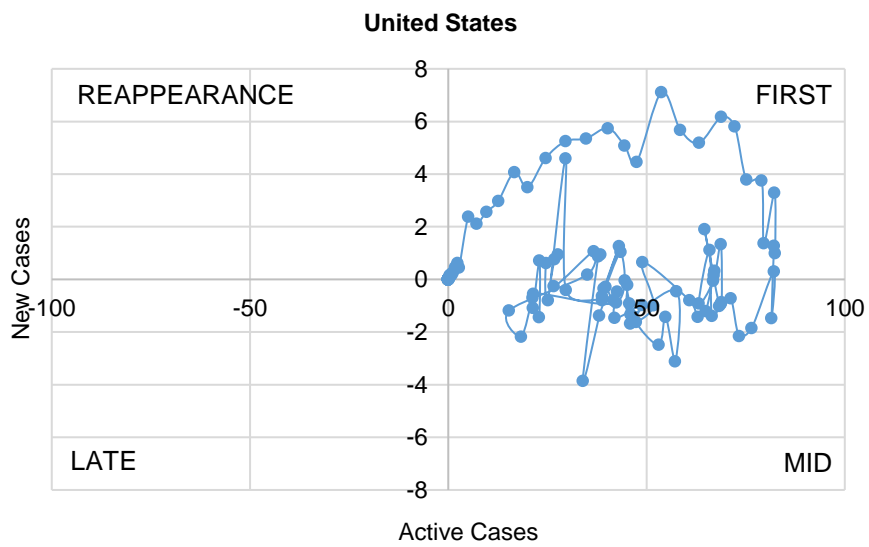
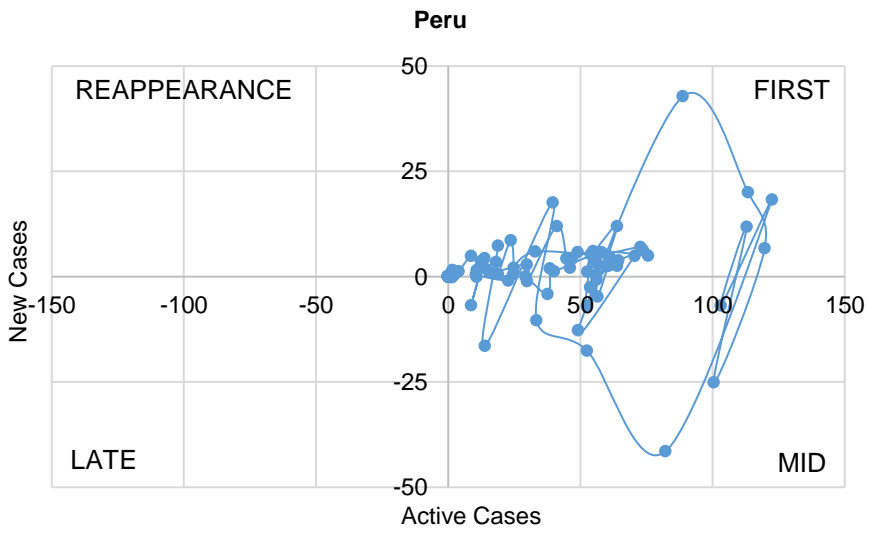
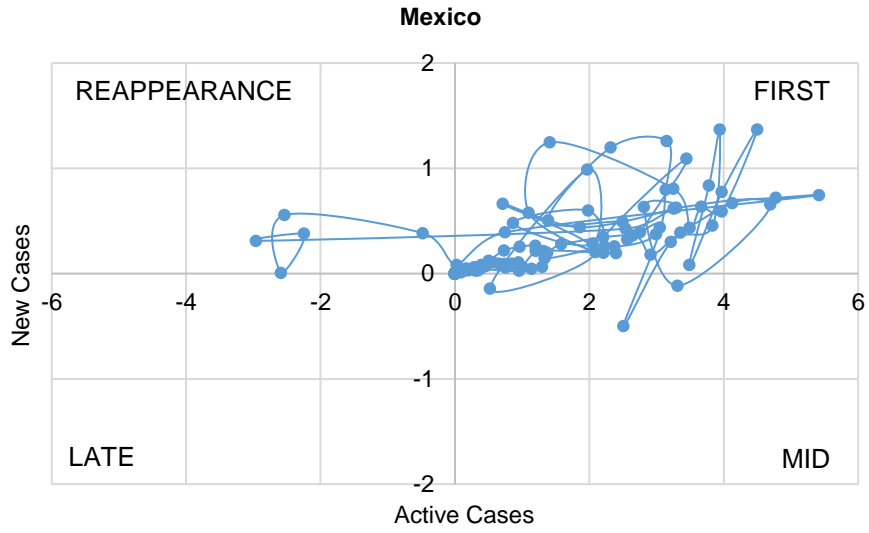


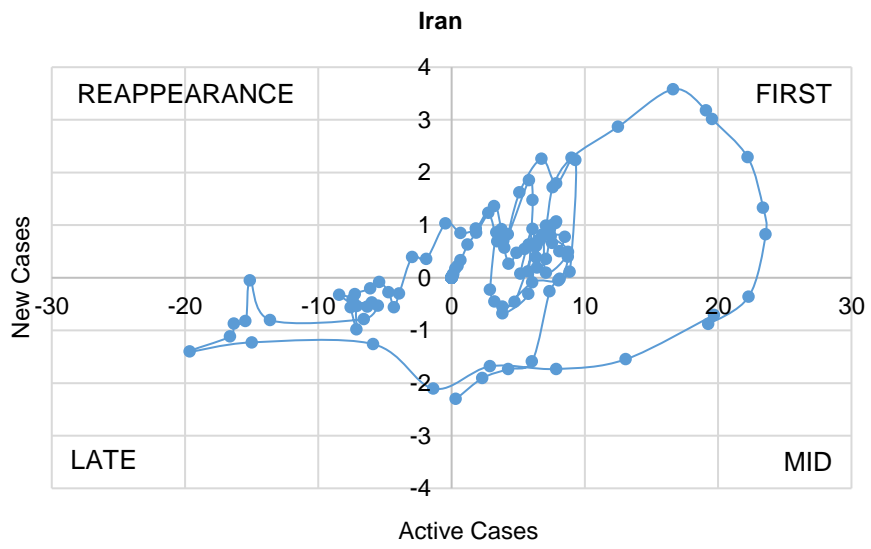
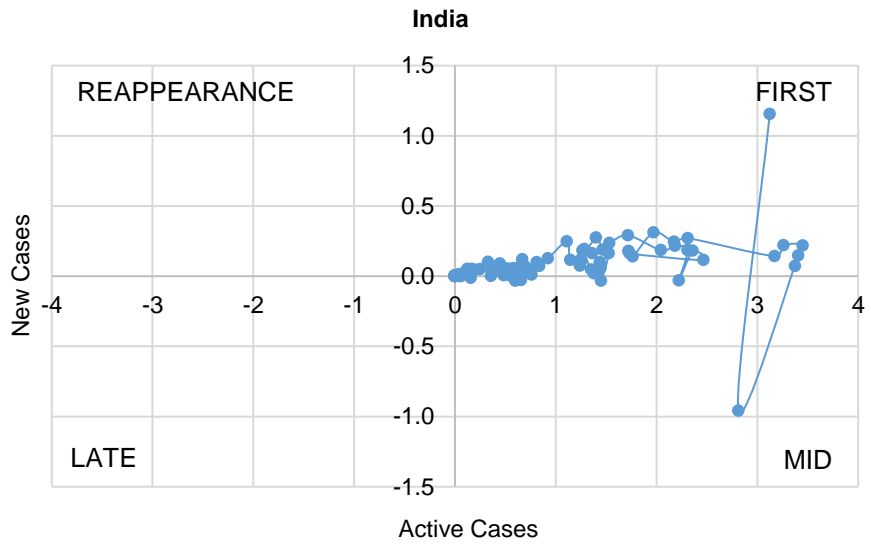
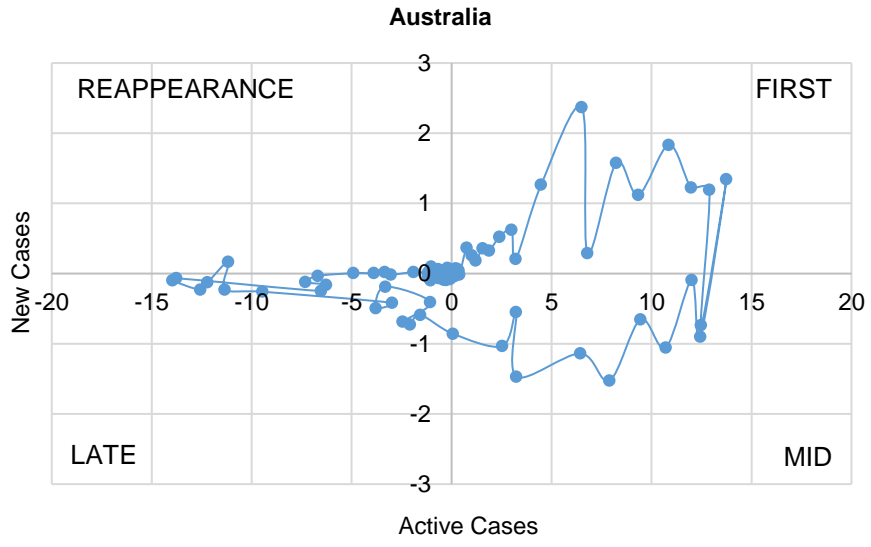


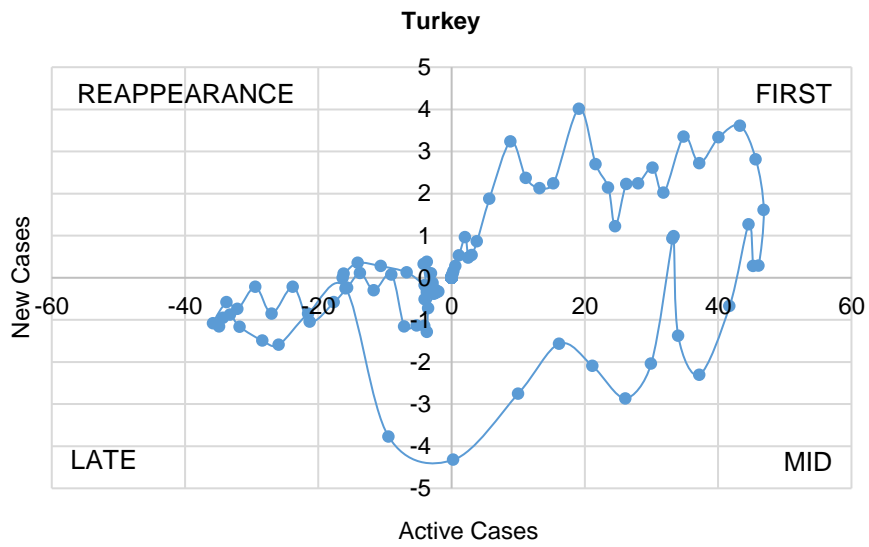
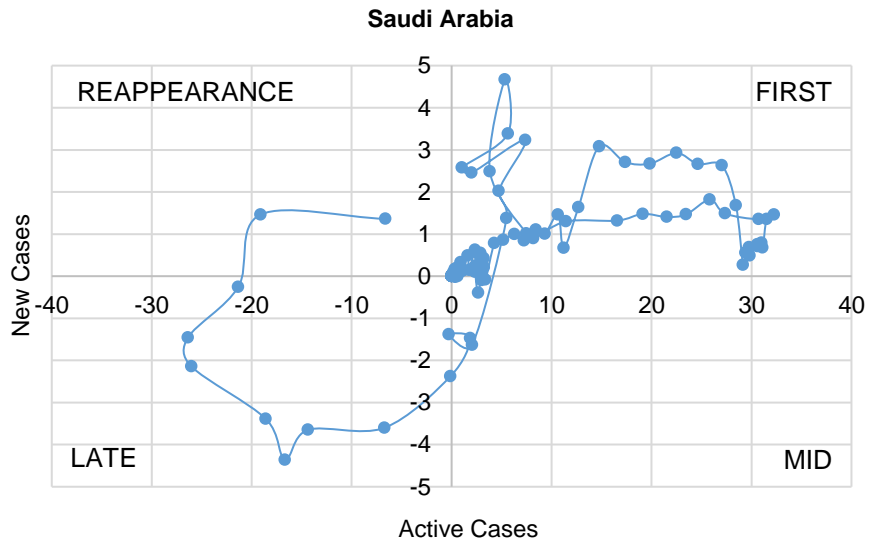
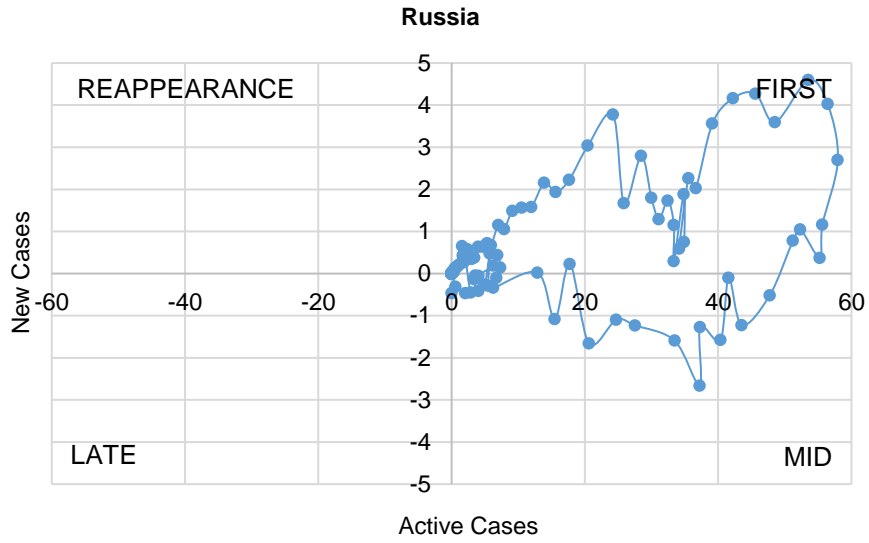












Sources: Haver Analytics, sourced from John Hopkins University; and AMRO staff calculations.