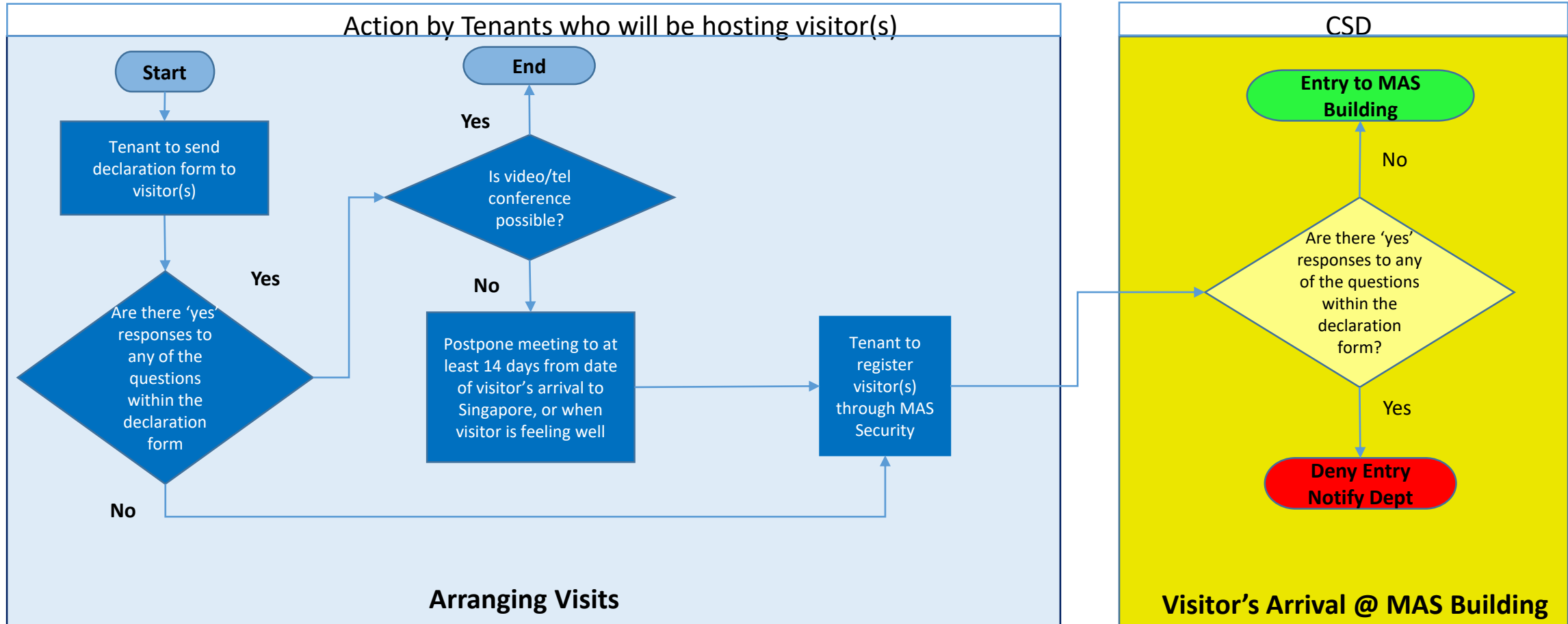


Enhanced Visitor Management Procedure for Visitors to MAS Building



Questions in Declaration Form

1. Have you or any of your household members returned from mainland China, Daegu and/or Cheongdo of the Republic of Korea in the last 14 days before the date of the meeting?
2. Have you been in close contact with any person who has returned from mainland China, Daegu and/or Cheongdo of the Republic of Korea in the last 14 days before the date of meeting?
3. Have you been in close contact with any person who has been issued with a Home Quarantine Order, Leave of Absence or Stay Home Notice in the last 14 days?
4. Are you currently feeling unwell (e.g. have signs and symptoms of respiratory illness such as fever, cough, sore throat and/or breathlessness)?
5. Are you taking any fever suppressing medication before entering the building?