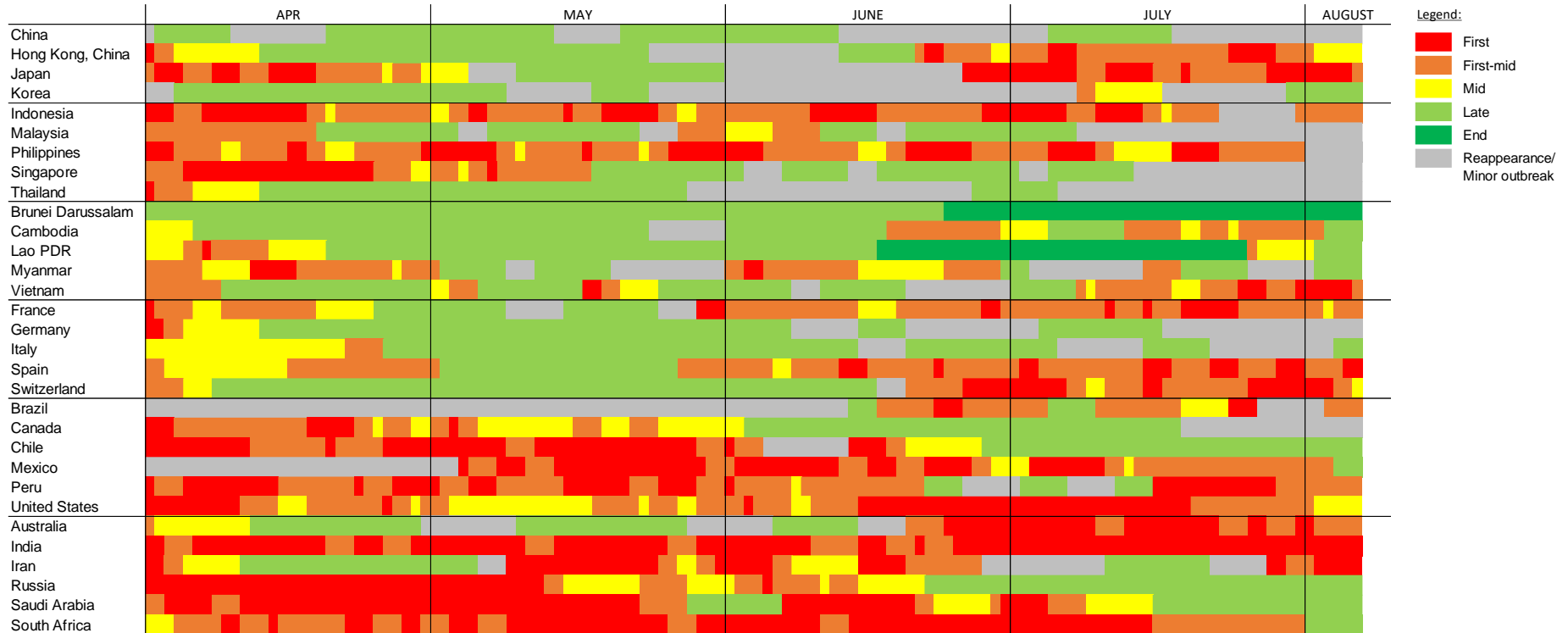


Friday, August 07, 2020

Data as of August 06, 2020

Figure 1. ASEAN+3 and Selected Economies: Covid Cycle Heat-map



Sources: Haver Analytics, sourced from John Hopkins University; and AMRO staff calculations.

Note: Based on [Hinojales, Marthe, Anne Oeking, and Li Lian Ong. 2020a. "Where are We in the Covid Cycle?" AMRO Analytical Note, Singapore, April 27.](#) Minor outbreaks classified as outbreaks in the bottom 75th percentile of a country's 7-day average daily new cases. The individual trajectories through the various stages of the Cycle are detailed in Figure 10.

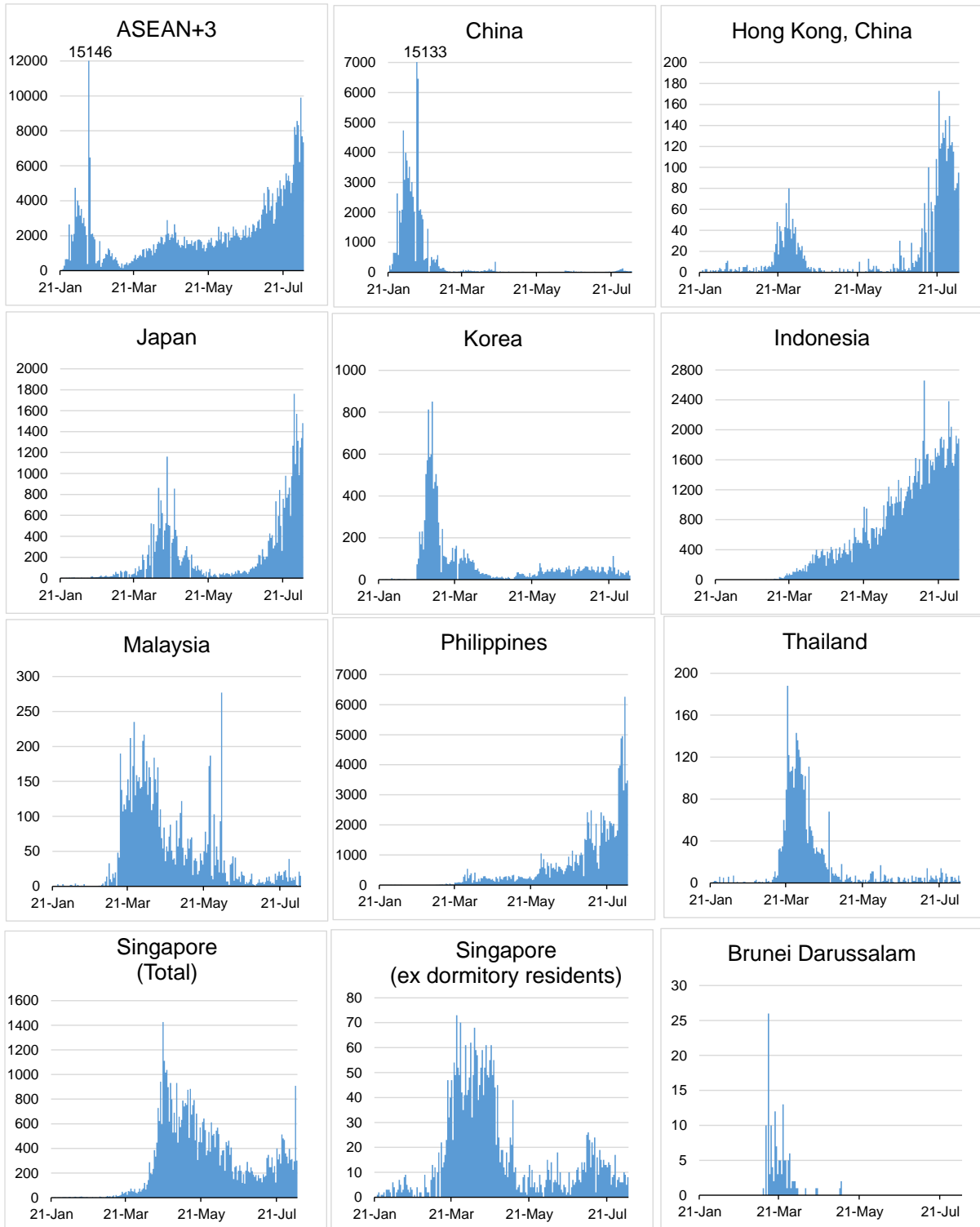
**Figure 2. ASEAN+3 and Selected Economies: Capacity of the Healthcare System during COVID-19**  
(Measured by the number of hospital beds to active cases)



Sources: Haver Analytics, sourced from John Hopkins University; World Health Organization; and AMRO staff calculations.

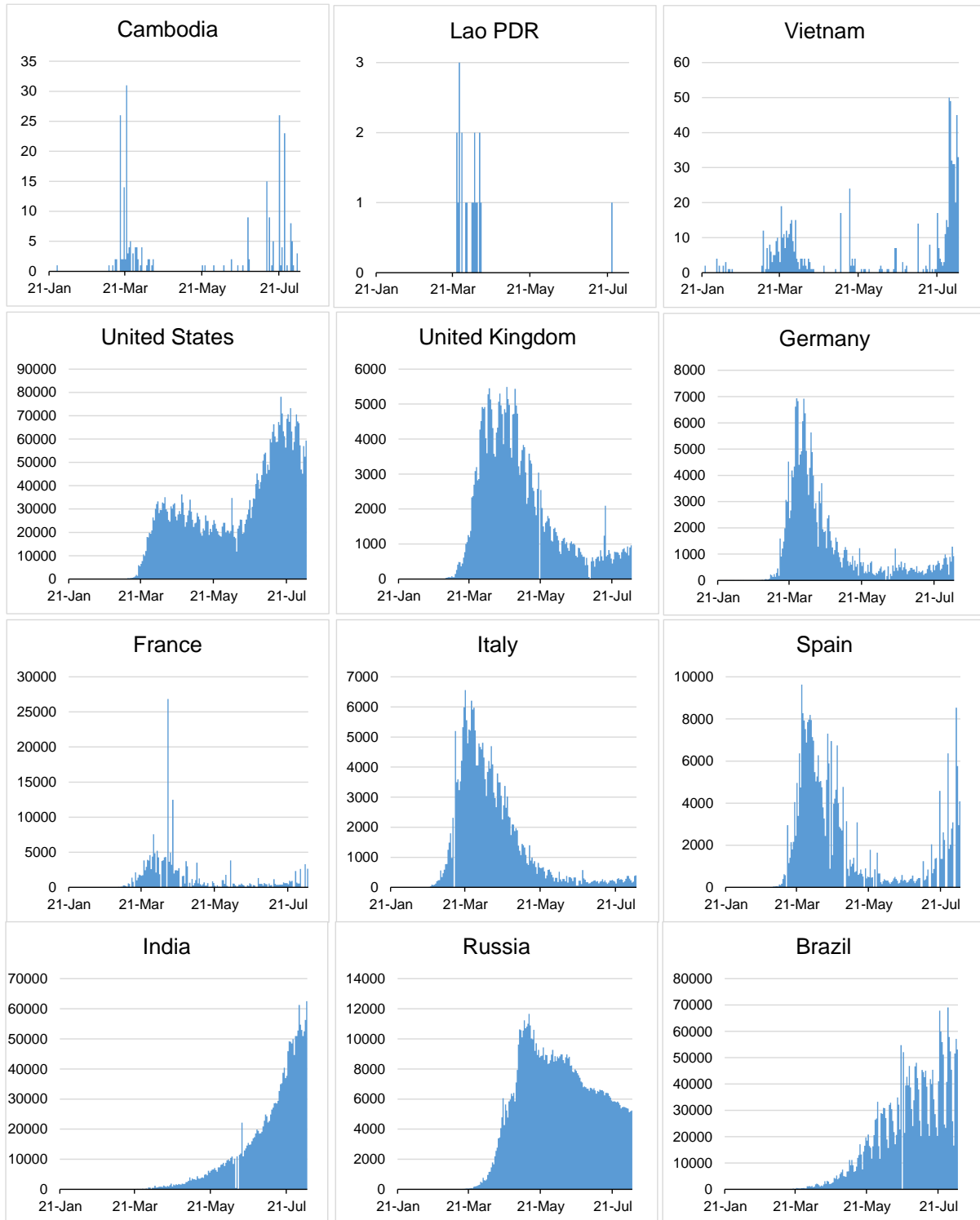
Note: The greener the heatmap, the greater the capacity of the healthcare system; the redder, the weaker the capacity.

**Figure 3. Selected Economies: Daily Confirmed Cases**



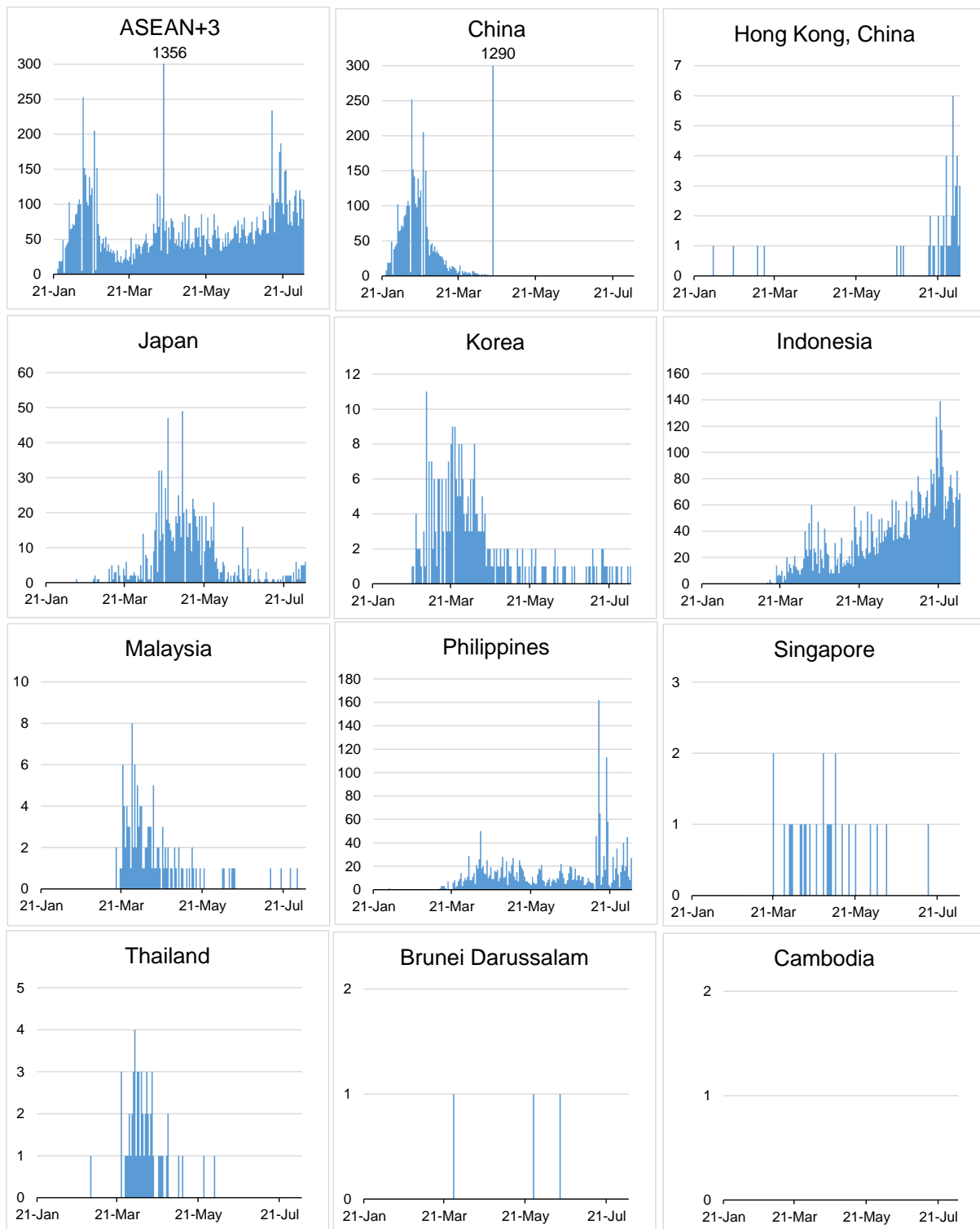
Note: For Singapore, the majority of the new confirmed cases belongs to work permit holders residing in dormitories. For the past one week (July 31- August 06), the proportion of this group of cases took up 98.2% of the total new cases.

**Figure 3. Selected Economies: Daily Confirmed Cases**  
(Cont'd)

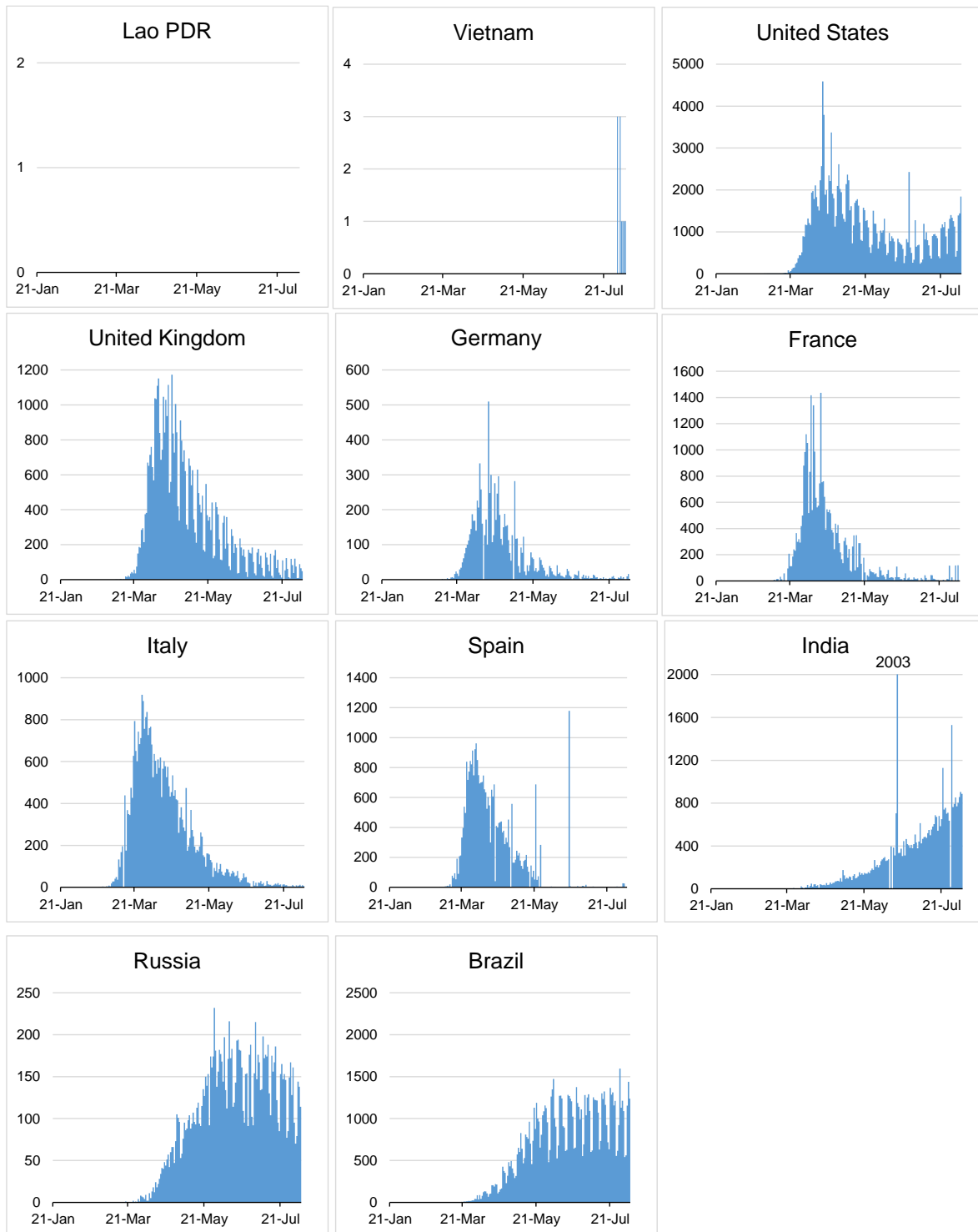


Sources: Haver Analytics, sourced from John Hopkins University; and AMRO staff calculations.

**Figure 4. Selected Economies: Daily Confirmed Deaths**

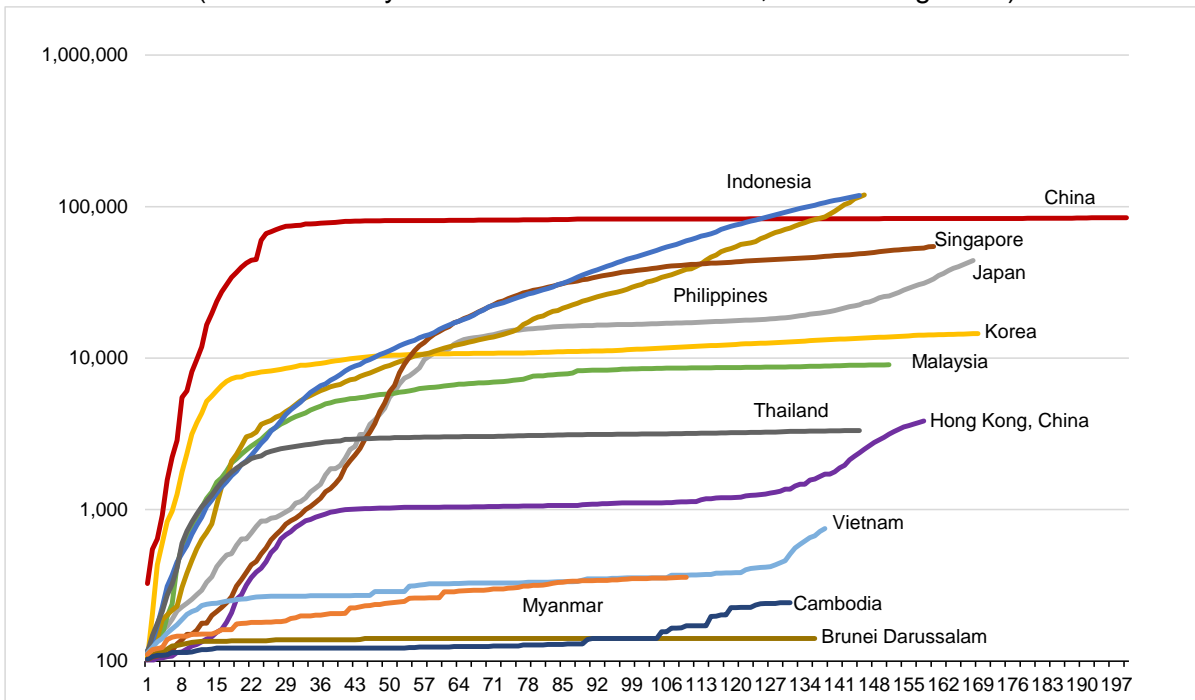


**Figure 4. Selected Economies: Daily Confirmed Deaths**  
(Cont'd)



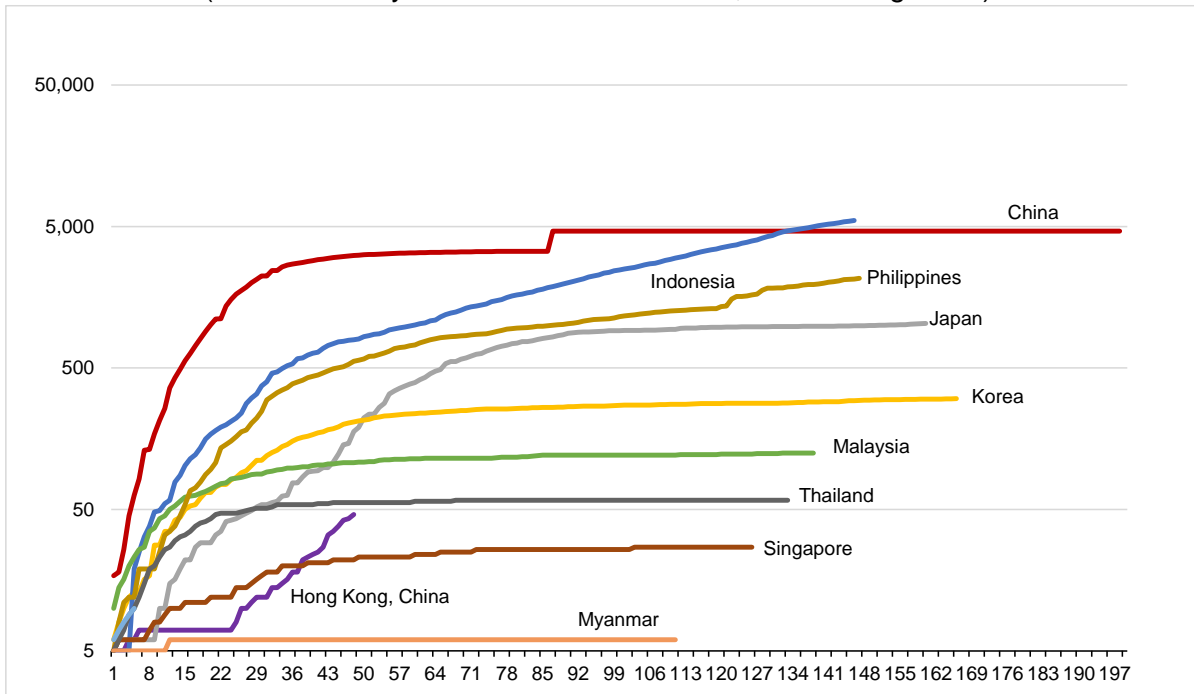
Sources: Haver Analytics, sourced from John Hopkins University; and AMRO staff calculations.

**Figure 5. ASEAN+3: Confirmed Cases**  
 (Number of days after 100<sup>th</sup> confirmed case; cases in log scale)



Sources: Haver Analytics, sourced from John Hopkins University; and AMRO staff calculations.

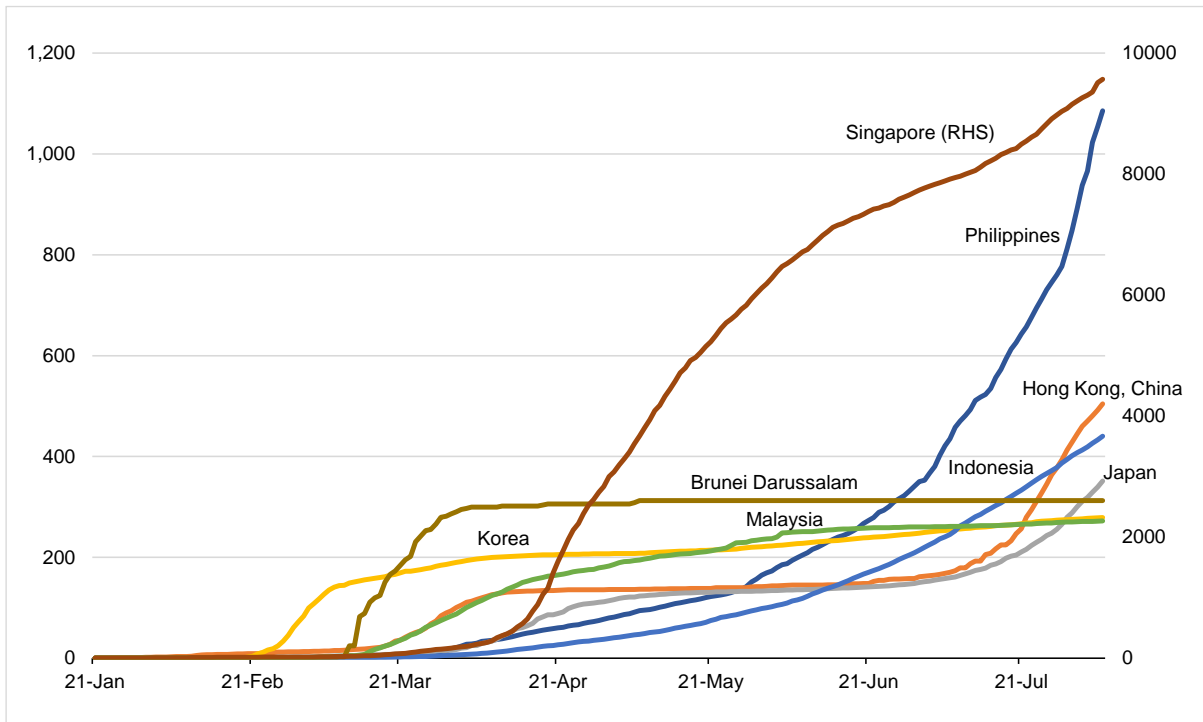
**Figure 6. ASEAN+3: Confirmed Deaths**  
 (Number of days after 5<sup>th</sup> confirmed case; cases in log scale)



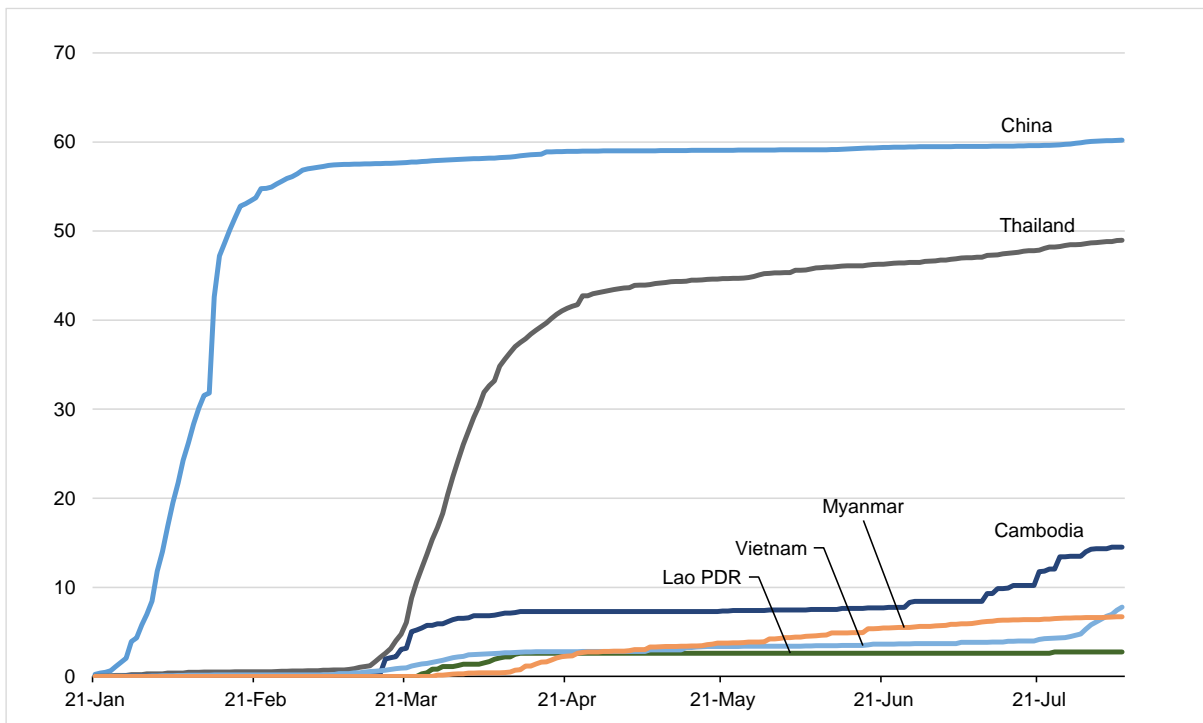
Sources: Haver Analytics, sourced from John Hopkins University; and AMRO staff calculations.

**Figure 7. Selected ASEAN+3 Economies: Confirmed Cases**

Per million population (above 100 cases/million)



Per million population (below 100 cases/million)

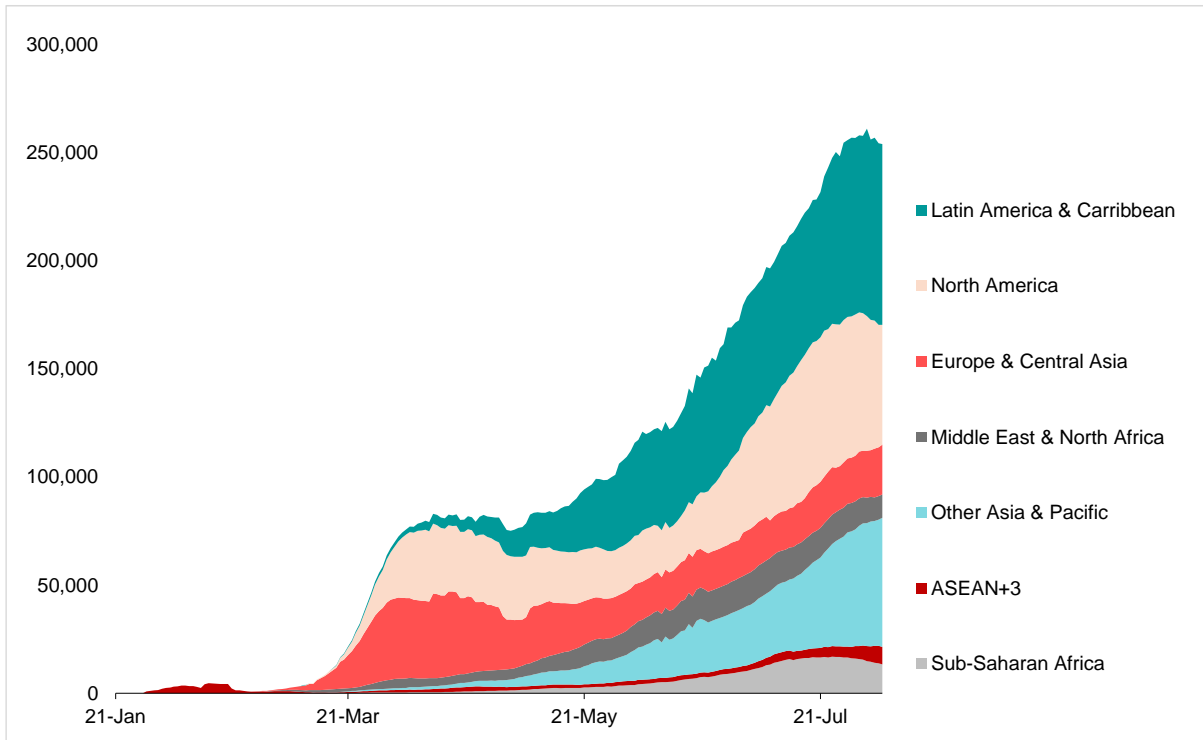


Sources: Haver Analytics, sourced from John Hopkins University; and AMRO staff calculations.

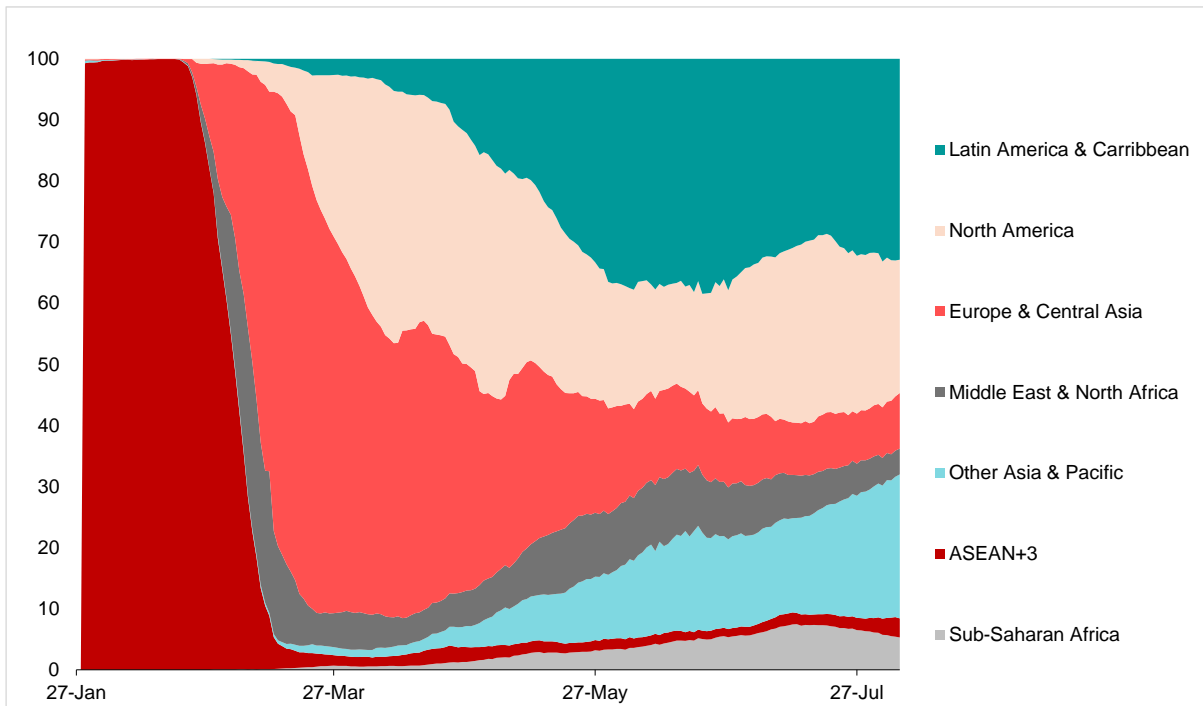


**Figure 8. World: Daily New Cases by Region**

(Number of cases, 7-day average)

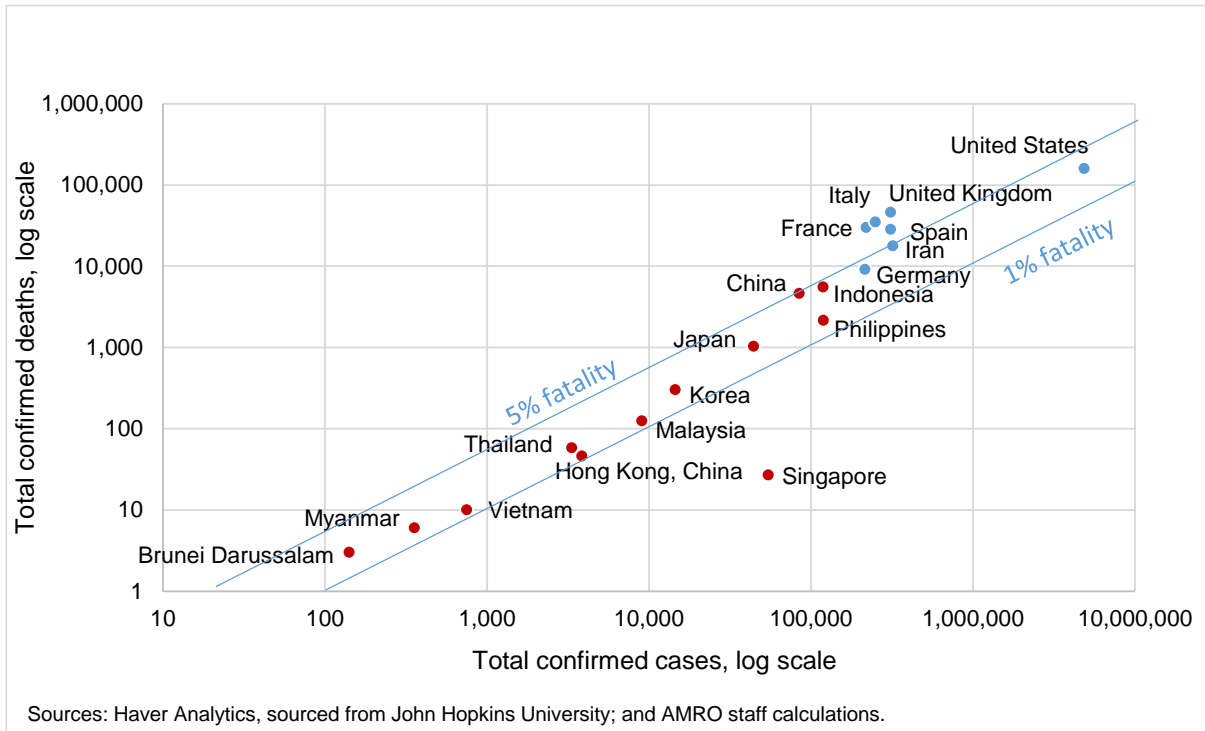


(Percentage share of total new cases, 7-day average)

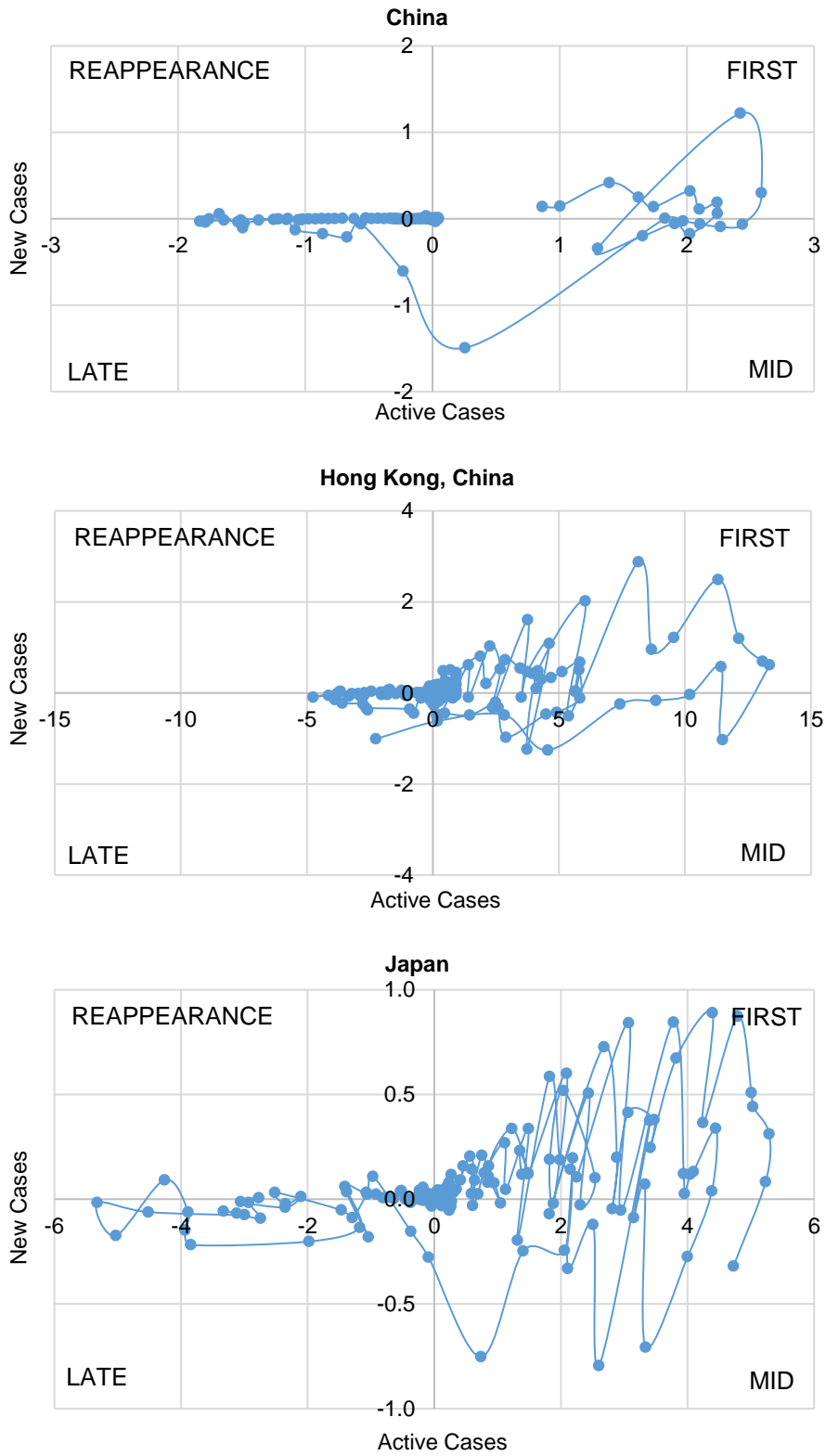


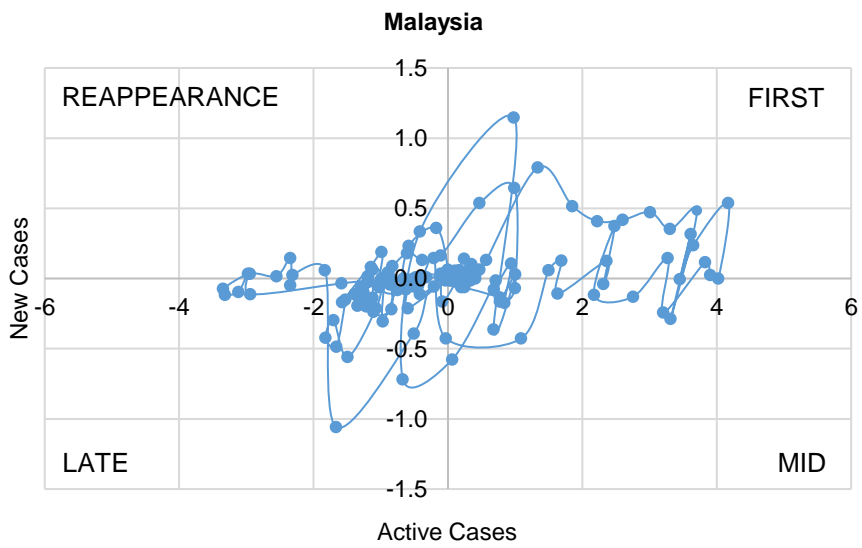
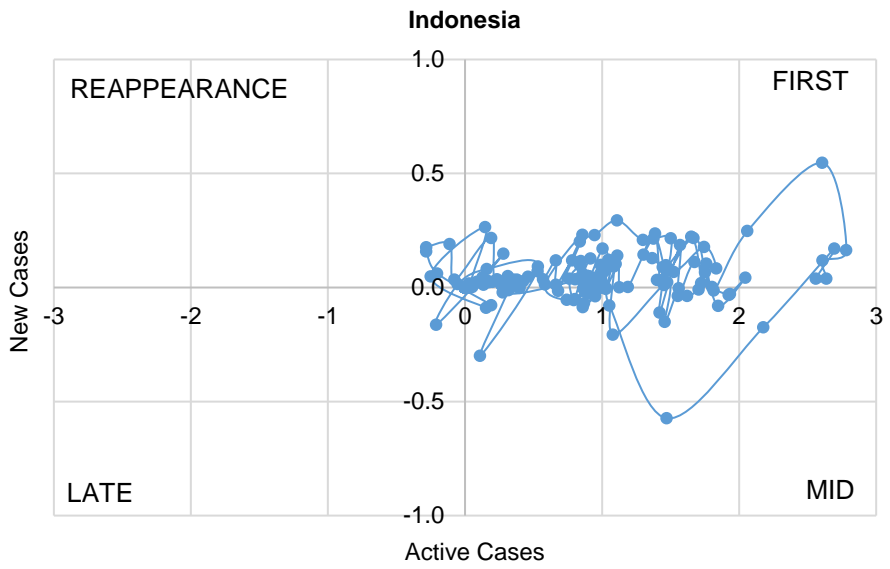
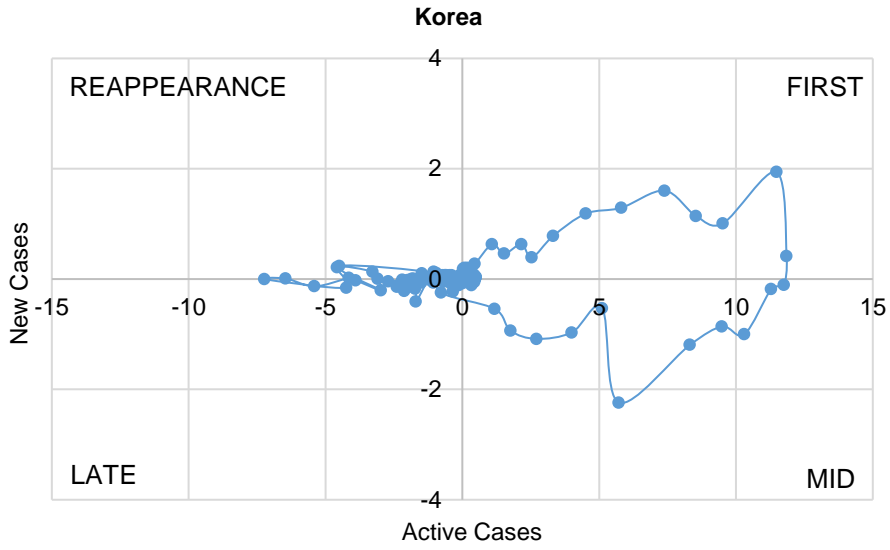
Sources: Haver Analytics, sourced from John Hopkins University; and AMRO staff calculations.

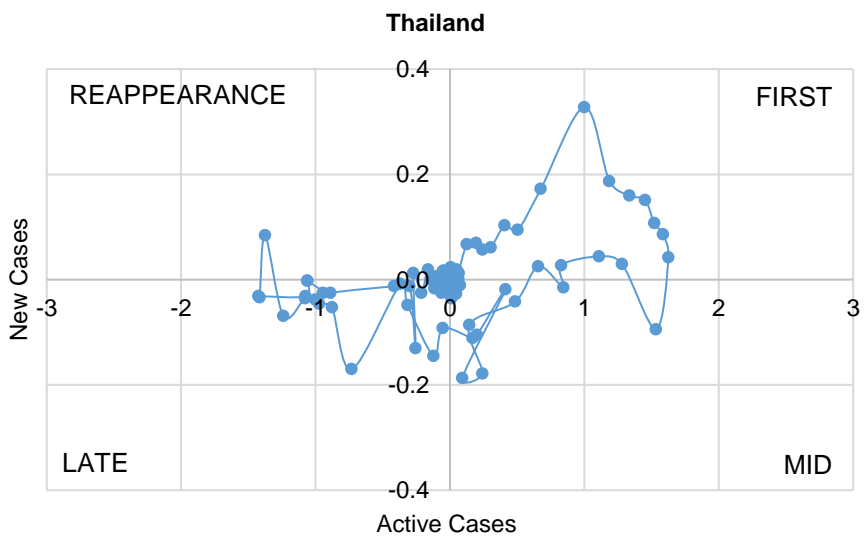
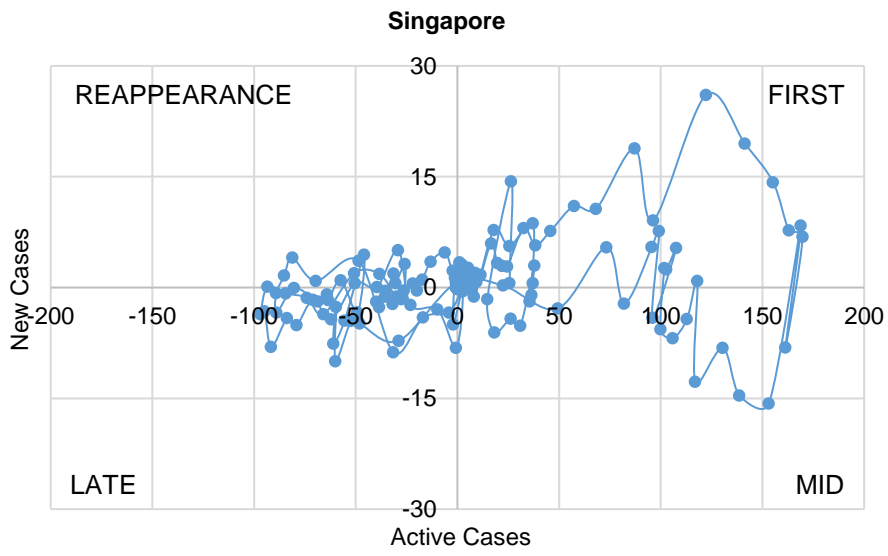
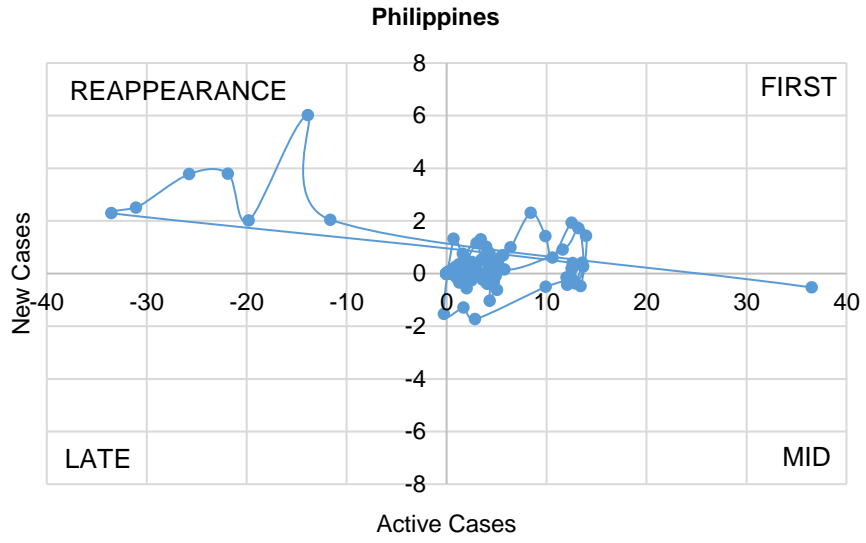
**Figure 9. Selected Economies: Confirmed Cases vs. Confirmed Deaths**



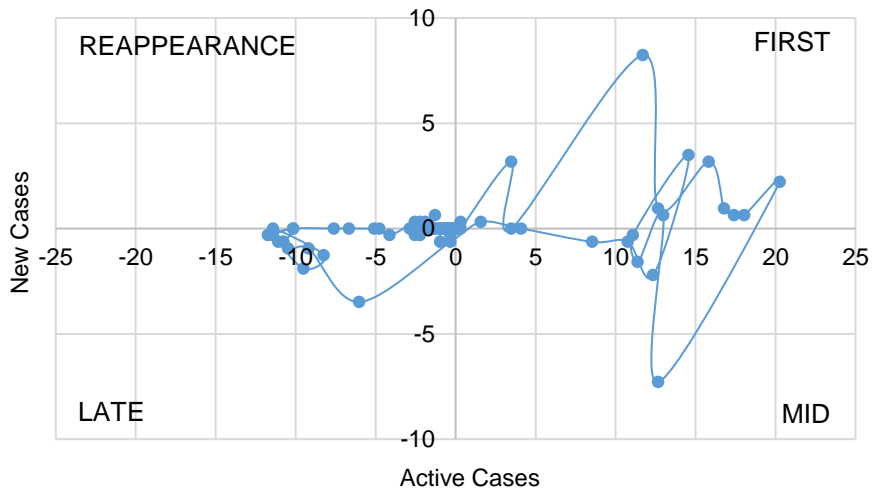
**Figure 10. ASEAN+3 and Selected Economies: Covid Cycle**  
 (Change in number of persons per one million population)



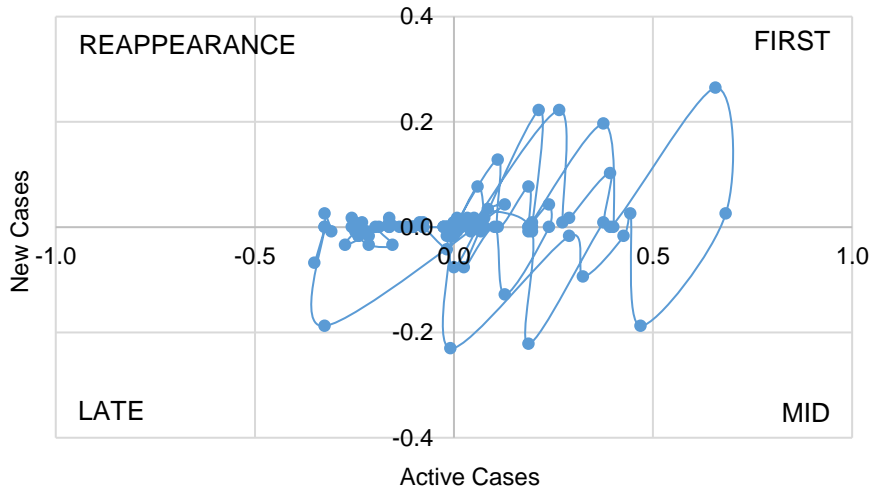




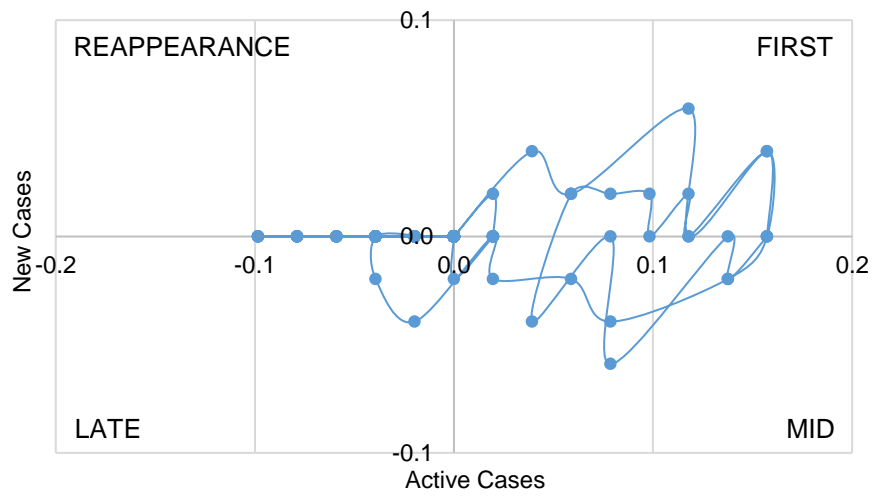
**Brunei Darussalam**

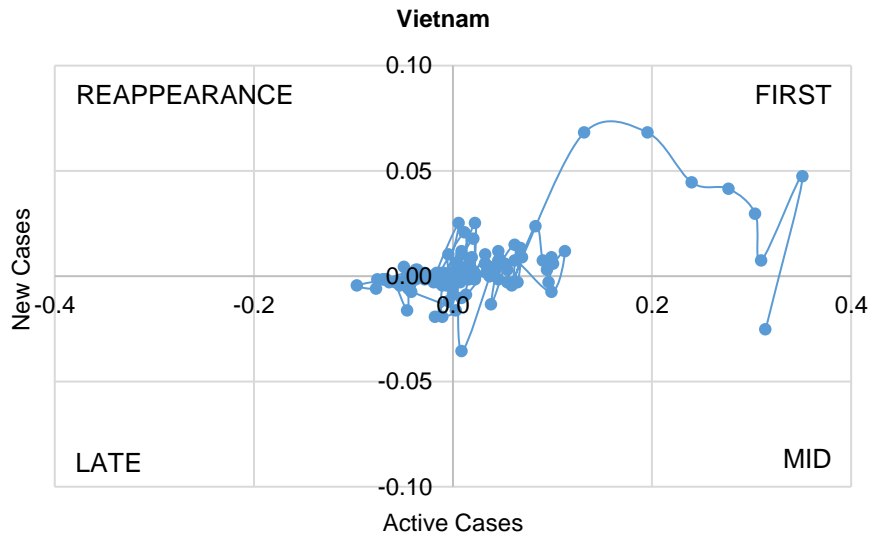
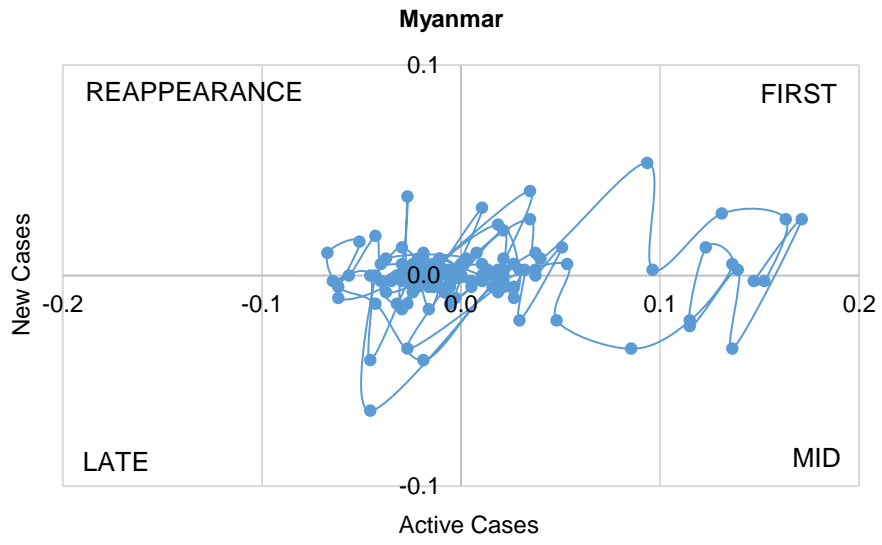


**Cambodia**

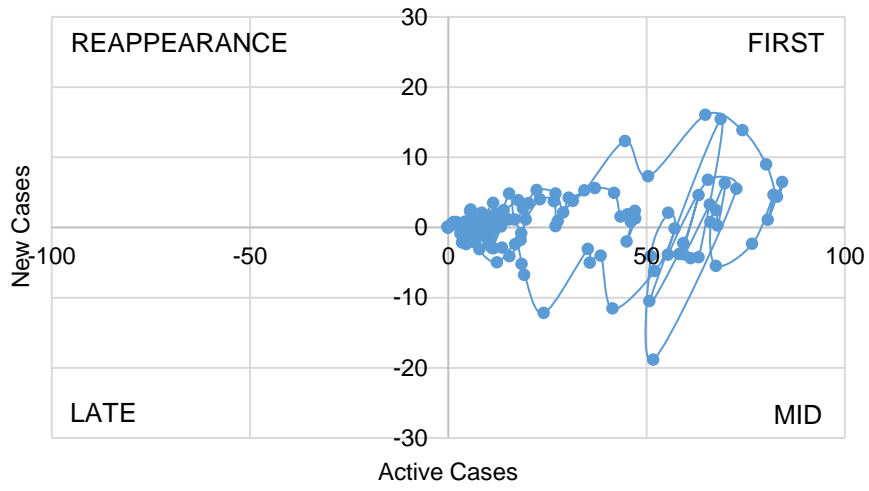


**Lao PDR**

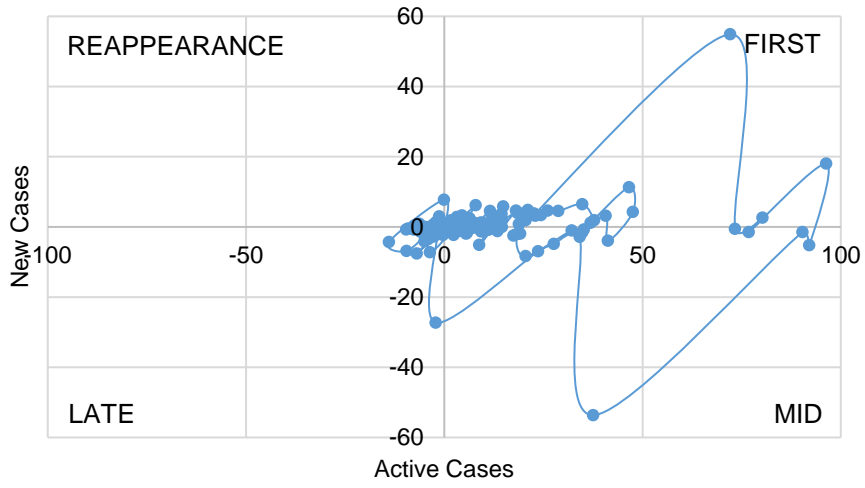




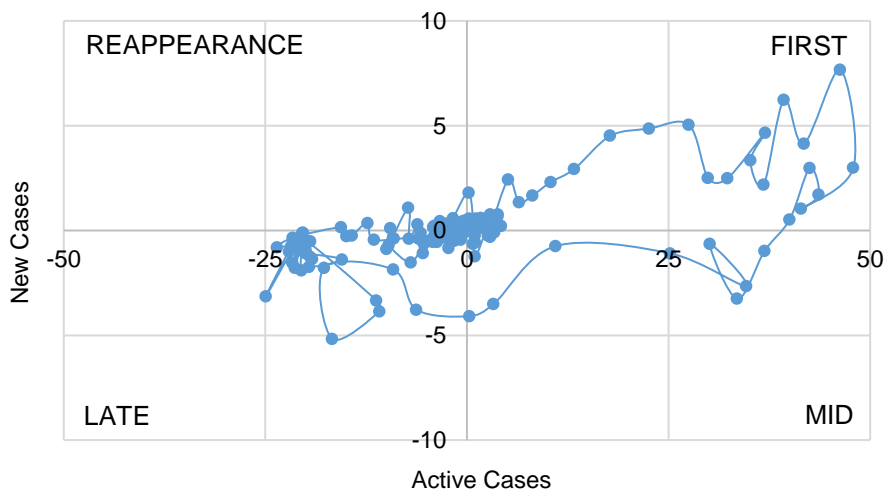
**Belgium**



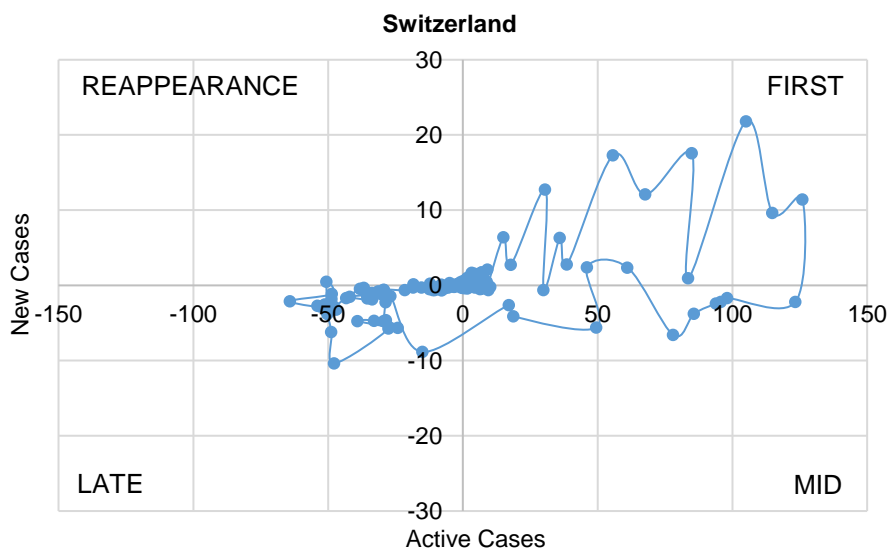
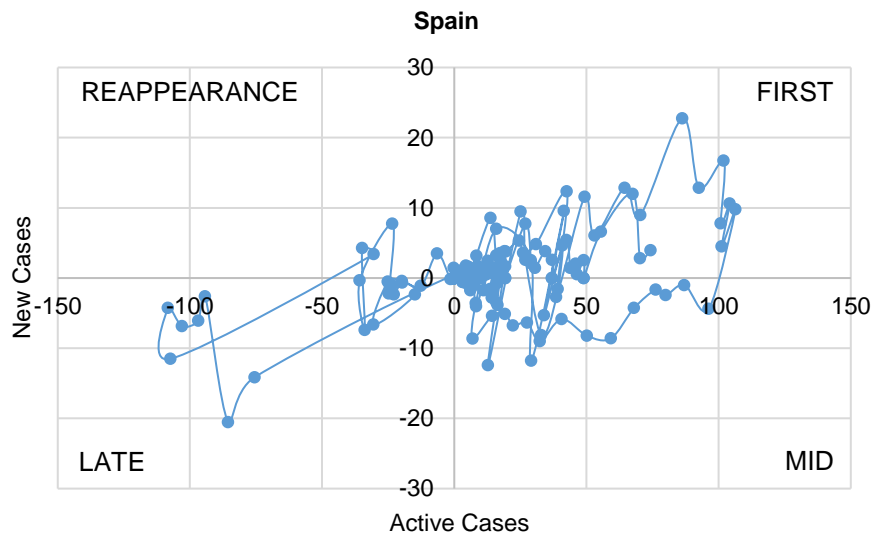
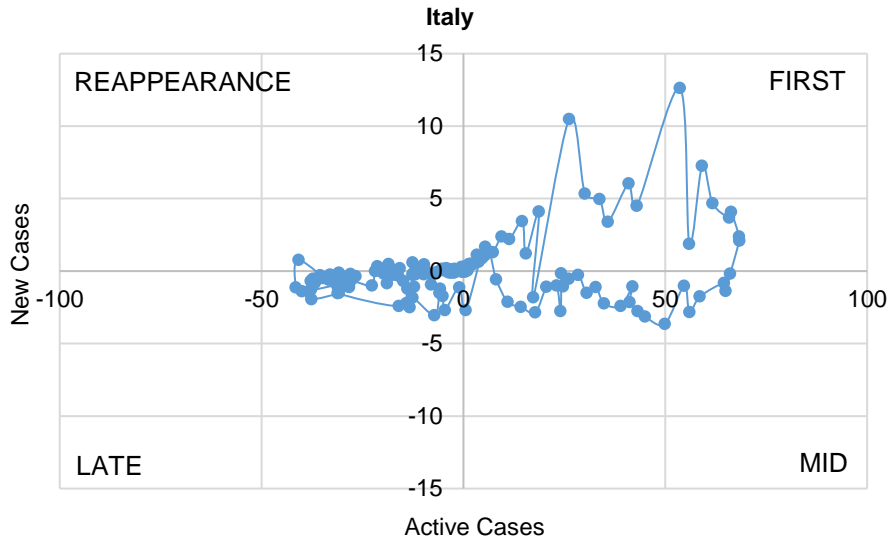
**France**

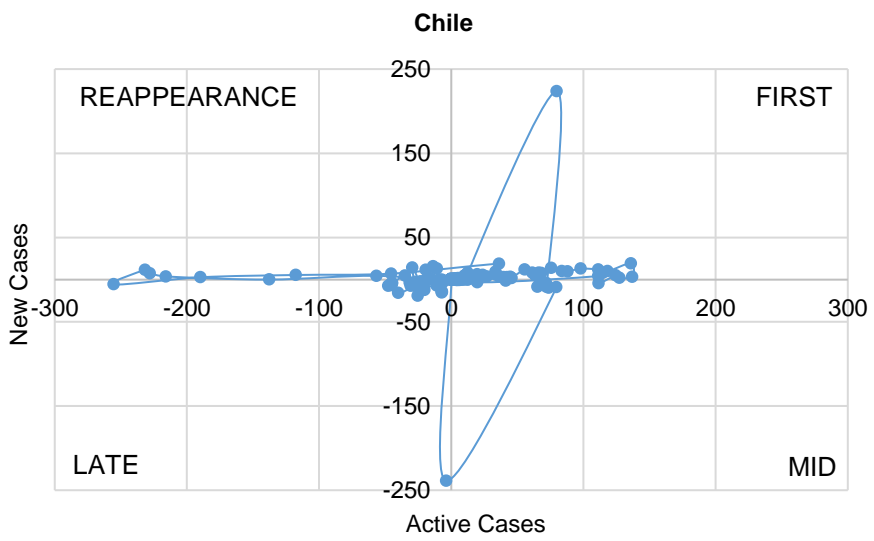
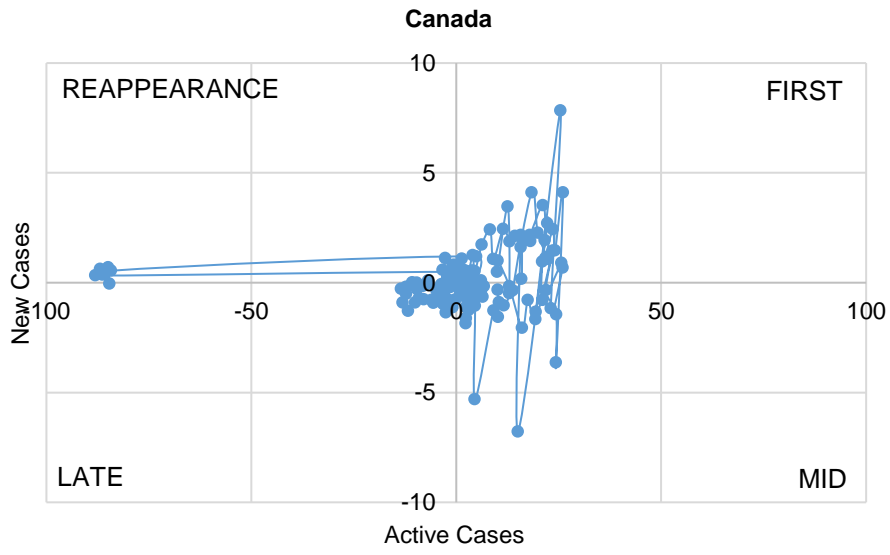
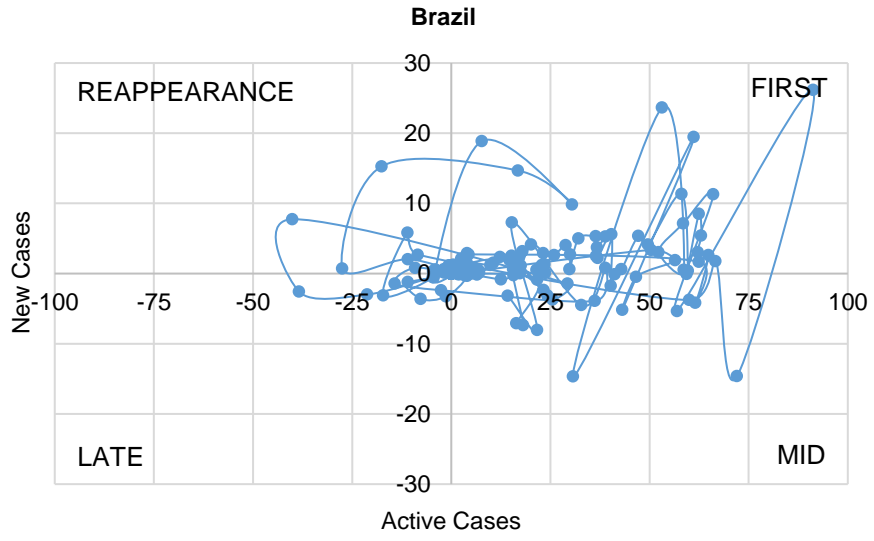


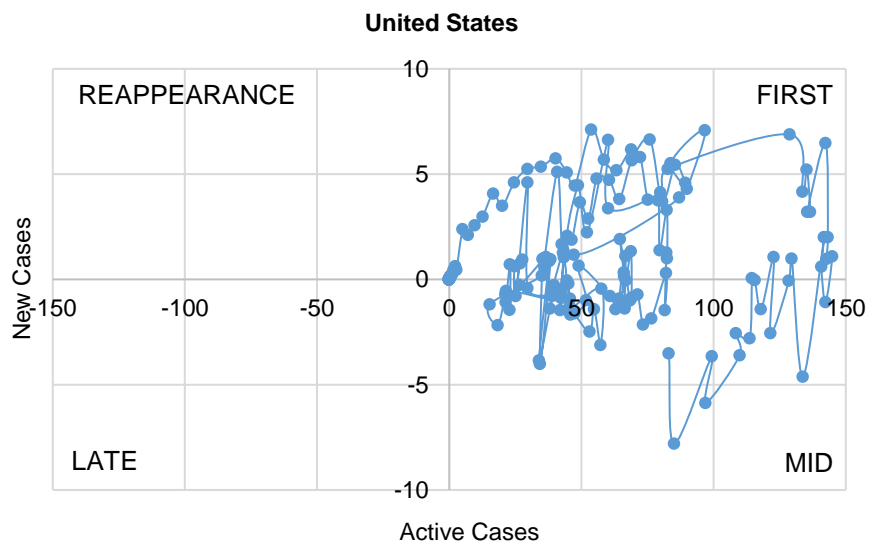
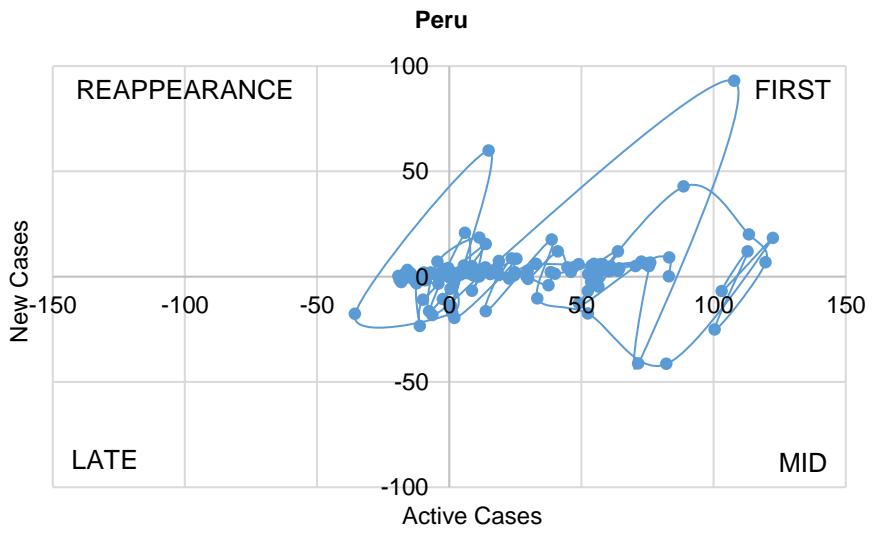
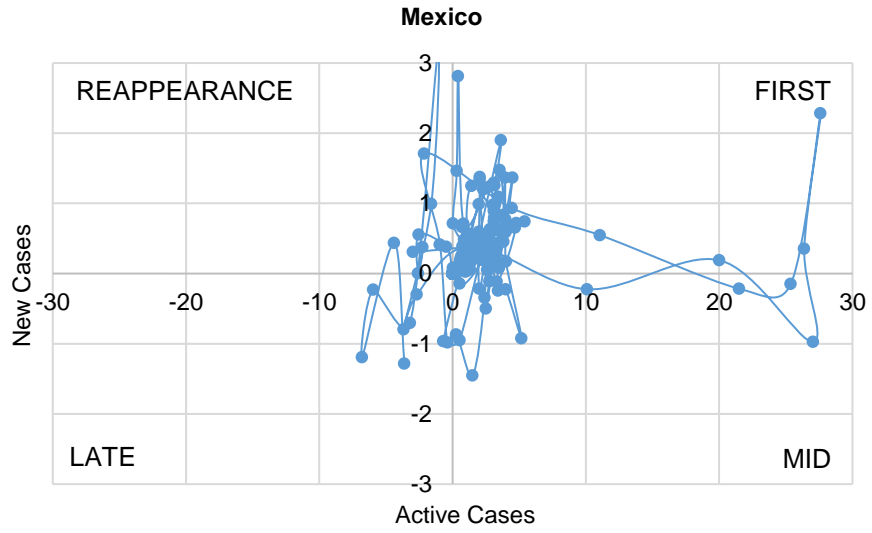
**Germany**

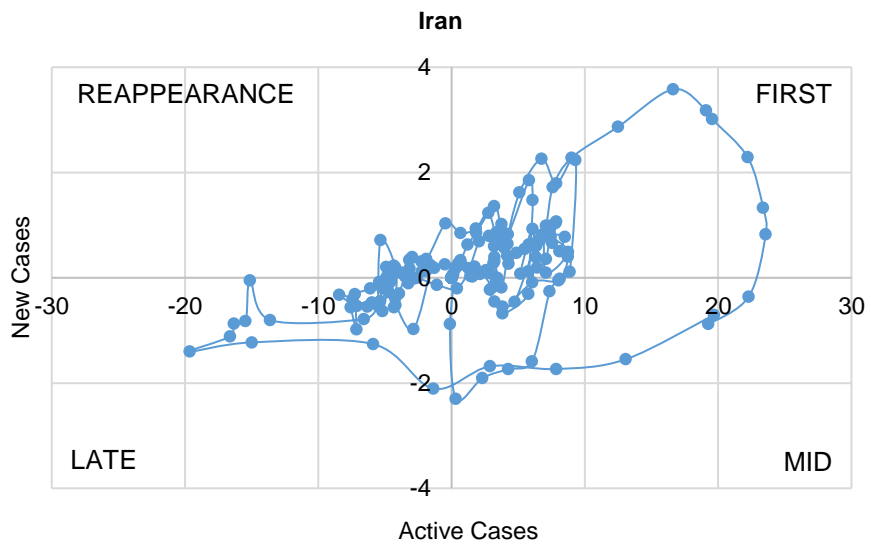
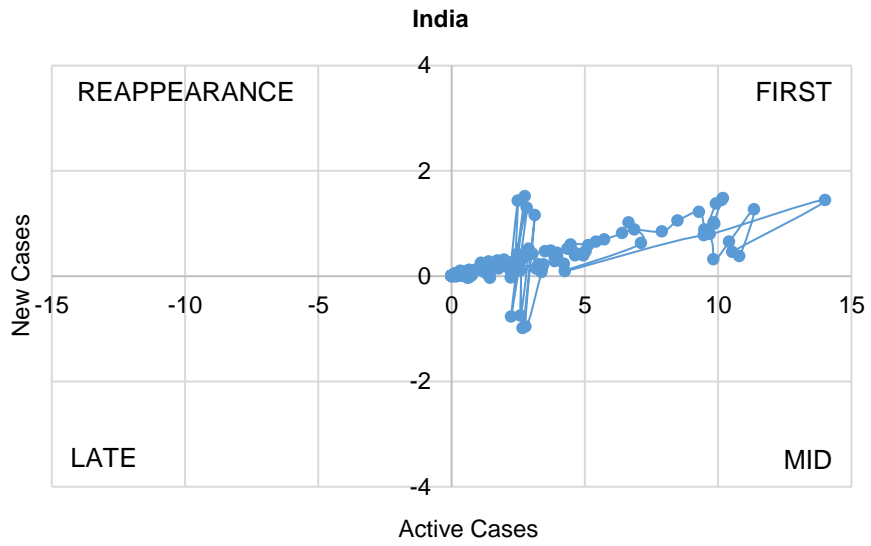
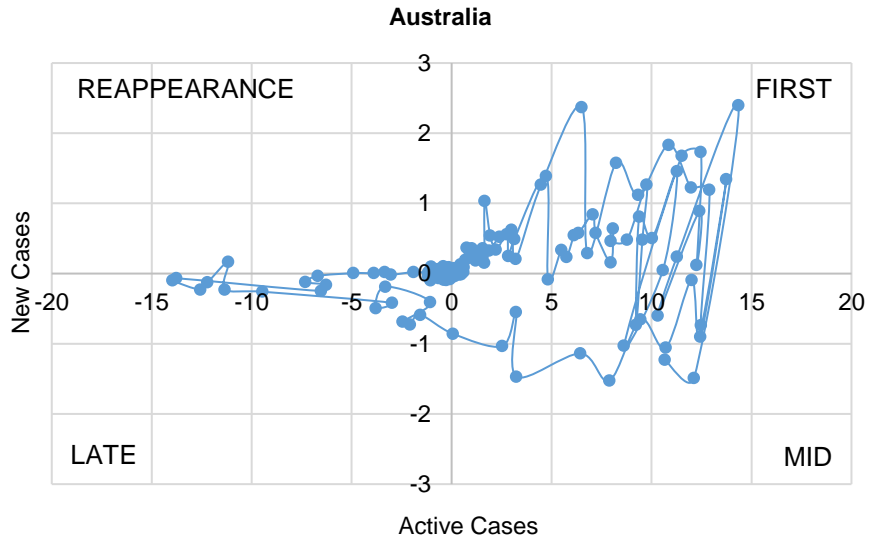


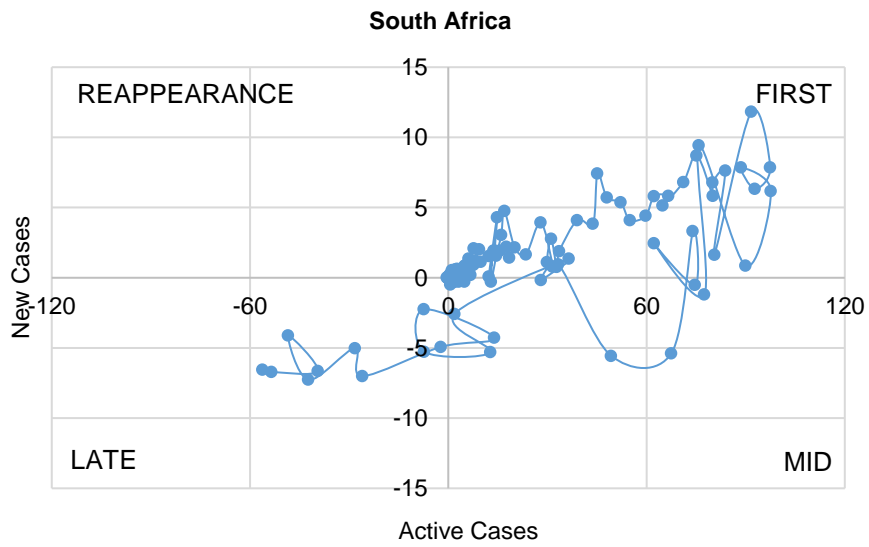
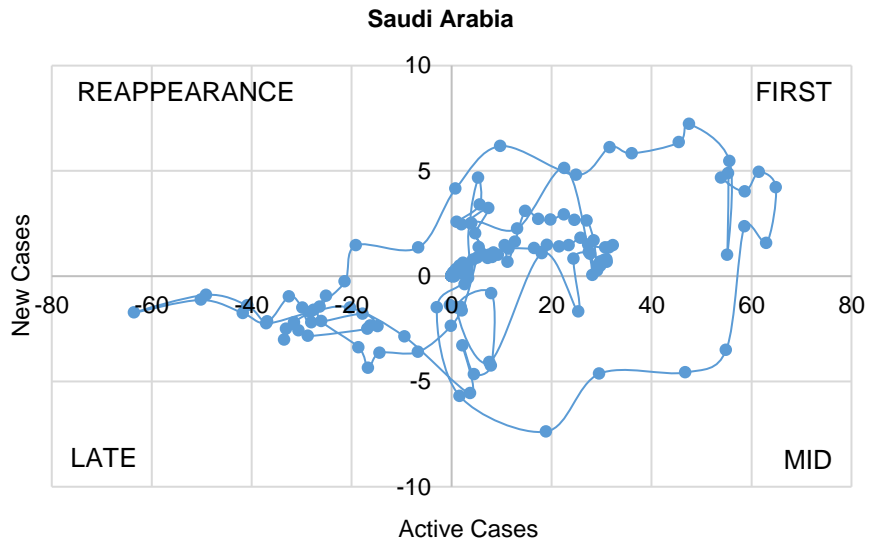
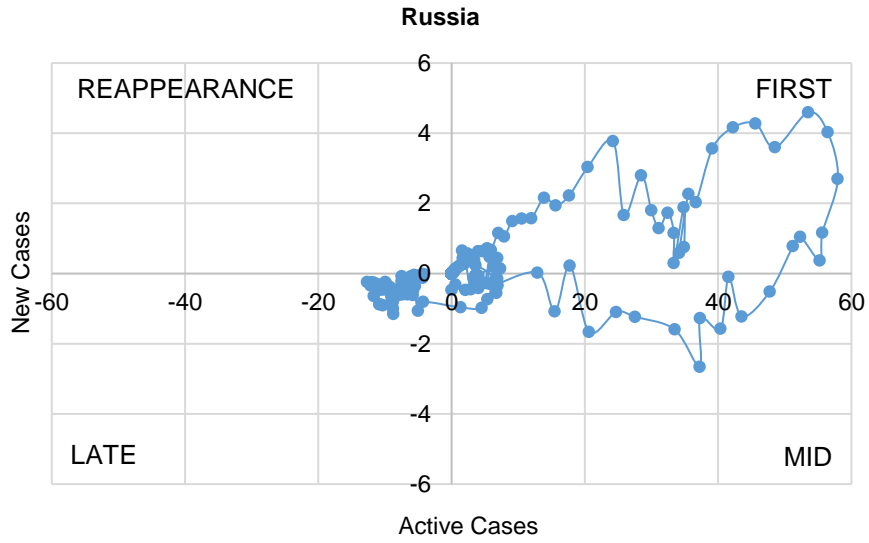












Sources: Haver Analytics, sourced from John Hopkins University; and AMRO staff calculations.